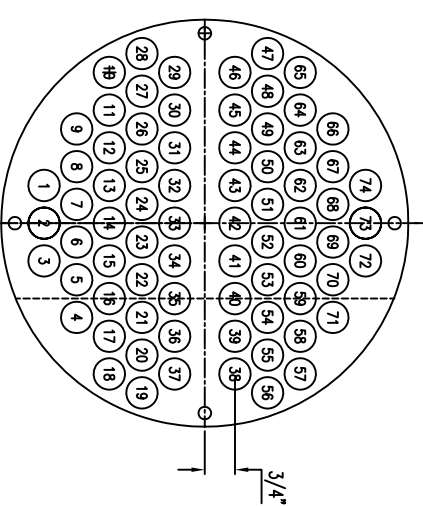
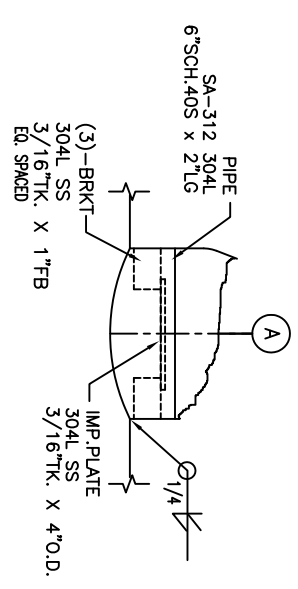
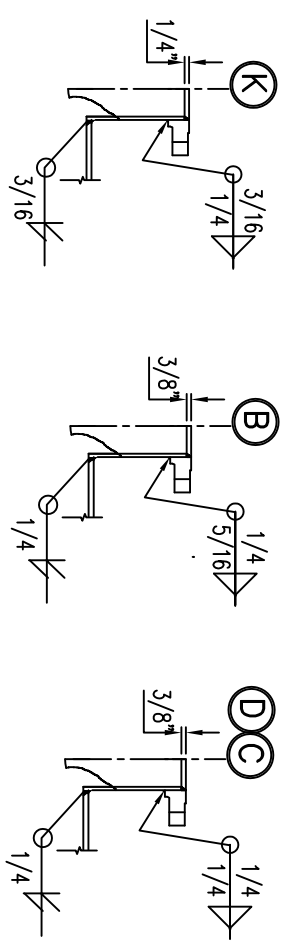
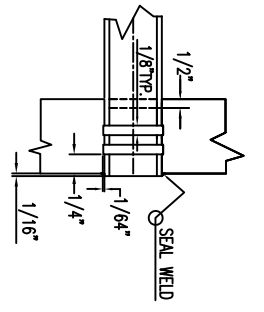
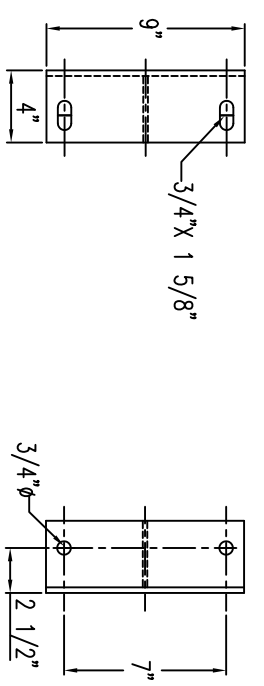
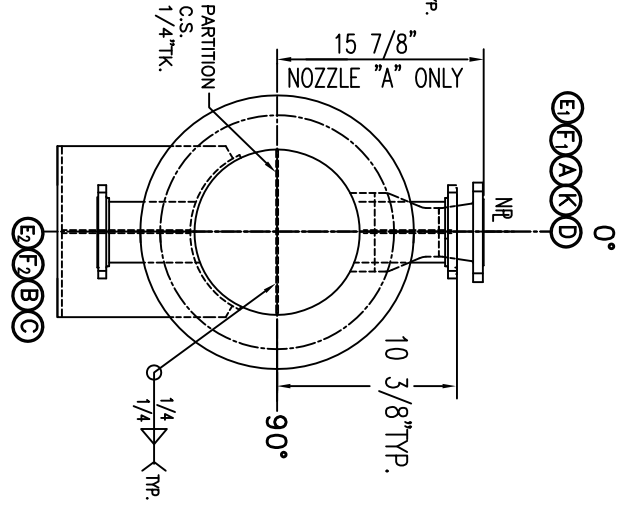
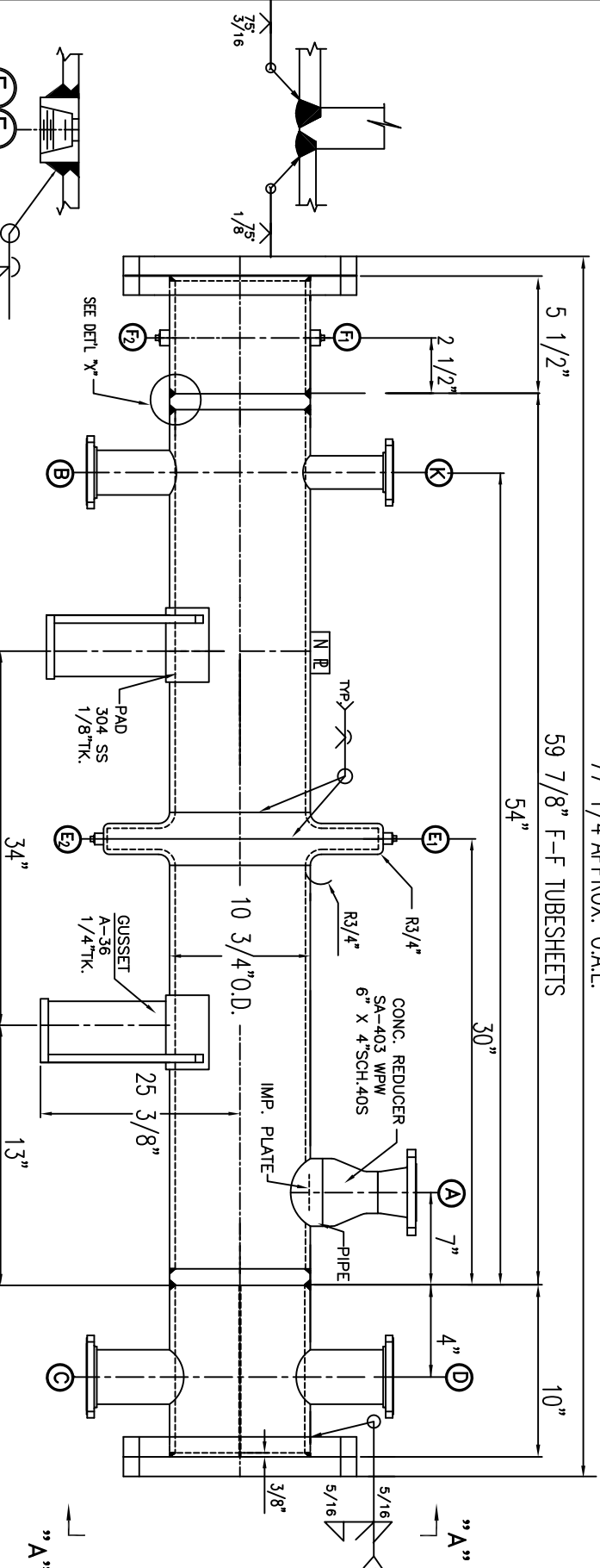


77 1/4" APPROX. O.A.L.



10" - TWO(2) PASS
 (74) - 3/4" DIA. TUBES ON 15/16" PITCH
 WITH FOUR(4) - 1/4" DIA. TIE RODS

ITEM	MAT'L SPEC	SIZE & DESCRIPTION	MARK	FLG & FITTING SPECIFICATIONS	NECK SPECIFICATIONS	SERVICE	REMARKS
SHELL	SA-312 304L	10 3/4" SCH.20 (.250" NOM. TK.)		SIZE, RATING & TYPE	MATERIAL		
TUBESHEETS	SA-240 304L	10 3/4" O.D. X 15/16" TK.				VAPOR IN	WITH CONS. REDUCE & PIPE
TUBES	SA-249 304L	(74) - 3/4" O.D. X 18 BWG 5'-0" LG. ON 15/16" TR. PITCH			3" SCH.40S	LIQUID OUT	
CHANNEL FLG	SA-516-70	14 7/8" O.D. X 10 7/8" I.D. X 1 5/16" TK.			2" SCH.40S		
CHANNEL CYL.	SA-53B ERW	10 3/4" O.D. SCH.30 (.307" NOM. TK.)			4" SCH.40		
CHANNEL COV.	SA-516-70	14 7/8" O.D. X 7/8" TK.	D	4" - 150# RFSO	SA-105	WATER OUT	
BAFFLES	304L SS	SEGMENTAL TYPE 4 3/4" NOM. PITCH 26% VERT. CUT	9				WITH PLUG
GASKETS	NON-ASBESTOS	1/16" TK. X 12" O.D. X 11 1/4" I.D.	F 1-2	3/4" - 3000# HPLG	SA-105	VENT/ DRAIN	WITH PLUG
STUDS	SA-193 GR.B7		3	ADDED WELDING SYMBOLS/CERTIFIED.		VENT/ DRAIN	
SUPPT'S	A-36	3/8" TK. AS PER DWG	2	CHANGED SUPPORT PROJECTION. WAS 3/8" / CERTIFIED			
EXP. JNT	SA-240 304L	18" O.D. X 1/4" TK. FLANGED & FLUED HEADS O.A.H.=4"	1	ISSUED FOR FABRICATION/CERTIFIED			
			0	ISSUED FOR APPROVAL			

MECHANICAL DESIGN CONDITIONS		SHELL SIDE	TUBE SIDE
DESIGN TEMPERATURE, °F		325	300
MIN. DESIGN METAL TEMP., °F		-20	-20
DESIGN PRESSURE, PSIG		170/-14.7	100
TEST PRESSURE, PSIG		225	130
CORROSION ALLOWANCE		-	1/16" EXCEPT TUBES
RADIOGRAPHY		-	-
CUSTOMER	THE CHEM-PRO GROUP LLC		
ADDRESS:	103 WILLIAM STREET BOONTON NJ 07005		
P.O. No.	1007011-06		
REFERENCE:	METHYL ACETATE COLUMN CONDENSER		
TAG:	E-79300		
RUBICON MODEL No.:	VS10B2-60HE		
RUBICON SERIAL No.:	3746-10		
No. Req'd:	1		
JOB No.:	J-2300-10		

DRN. Y.P.	DATE	CHK.	DATE	APP.	DATE

REVISION	NO.	DATE	BY	APP.

RUBICON INDUSTRIES CORP.
 848 E. 43rd ST., BROOKLYN, N.Y. 11210

B-3746-10 REV.4

GENERAL NOTES

- CONSTRUCTION TO COMPLY WITH A.S.M.E. CODE SECTION VIII, DIV 1 LATEST EDITION.
- A.S.M.E. STAMP & NAT'L BD. INSPECTION & REGISTRATION.
 YES NO
- TEMA CLASS " " , TYPE " "
- SQ. FT. HEAT TRANSFER SURFACE AREA.
- ALL BOLT HOLES TO STRADDLE CENTERLINES.
- SEE VIEW "A-A" FOR TRUE NOZZ. ORIENTATION.
- ALL DIMENSIONS ARE IN INCHES.

- SEAL WELD TUBES TO TUBESHEETS
- DYE CHECK TUBE TO TUBESHEET WELDS
- PAIN (CARBON STEEL ONLY):
 SURFACE PREPARATION TO SSPS-SP-10
 TWO(2) SHOP COATS:
 CARBOLINE-THERMALINE 450 SELF PRIMING EPOXY
 4-5 MILS DFT COLOR GRAY
- PROVIDE CRN PROVINCE QUEBEC
- SHELL SIDE MMDT=251.3°F
- TUBESIDE MMDT=162.4°F
- NOZZLE FLANGES AS PER ASME B16.5