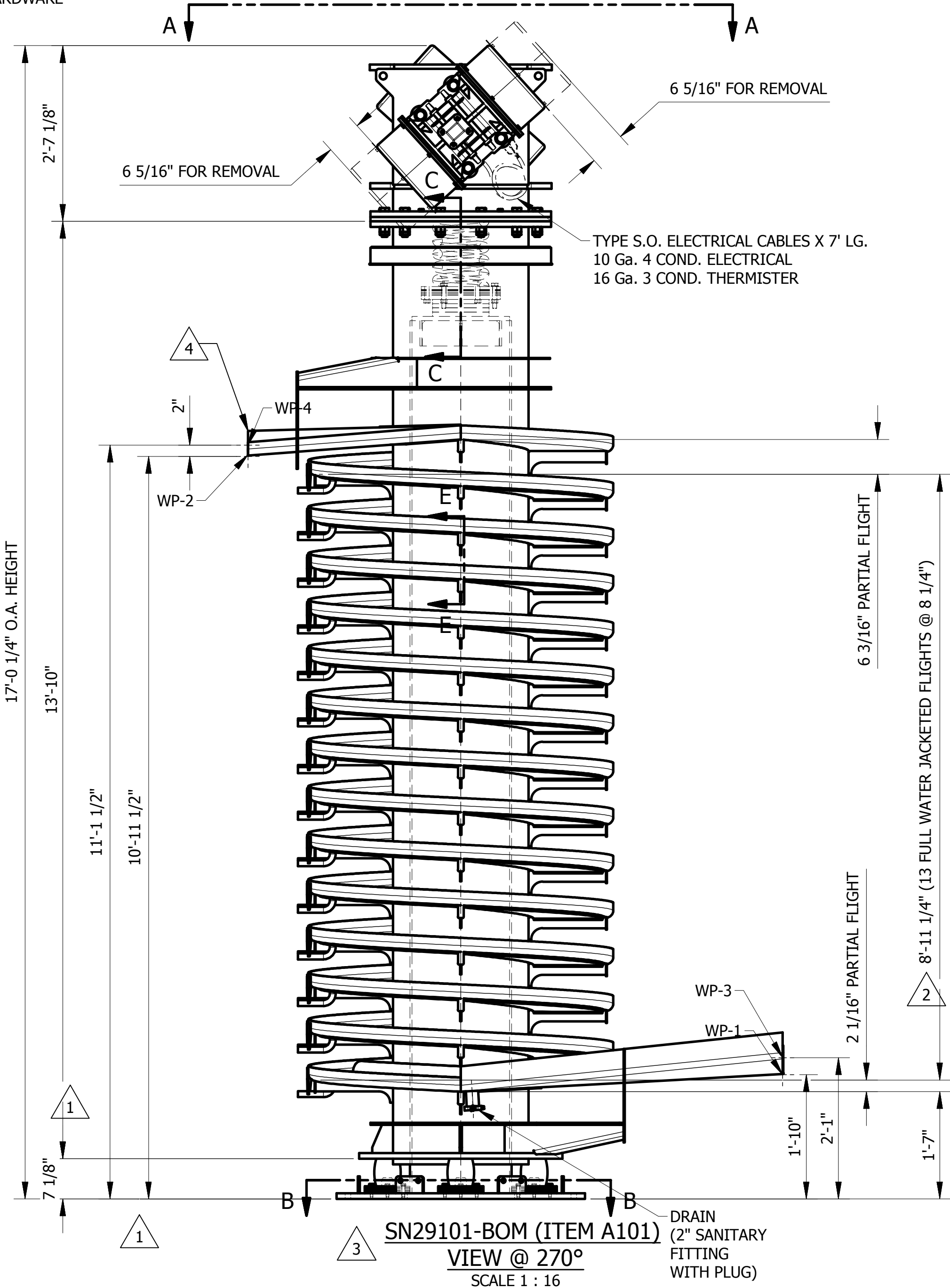


SECTION E-E  
SCALE 3 : 16

# INDICATES REVISION NUMBER  
USE "GENUINE CARRIER PARTS" TO  
MAXIMIZE PERFORMANCE,  
MINIMIZE DOWNTIME.  
CALL 800-547-7278 OR EMAIL TO  
ams@carriervibrating.com

REV	DESCRIPTION	DATE	NAME
4	CHANGED DISCHARGE CHUTE LENGTH	11/9/17	JAD
3	UPDATED ALL VIEWS	10/31/17	JAD
2	CHANGED WATER JACKET ORIENTATION	10/25/17	JAD
1	ADDED DIMENSIONS AND NOTATIONS TO DRAWING	10/6/17	JAD
REVISION HISTORY			

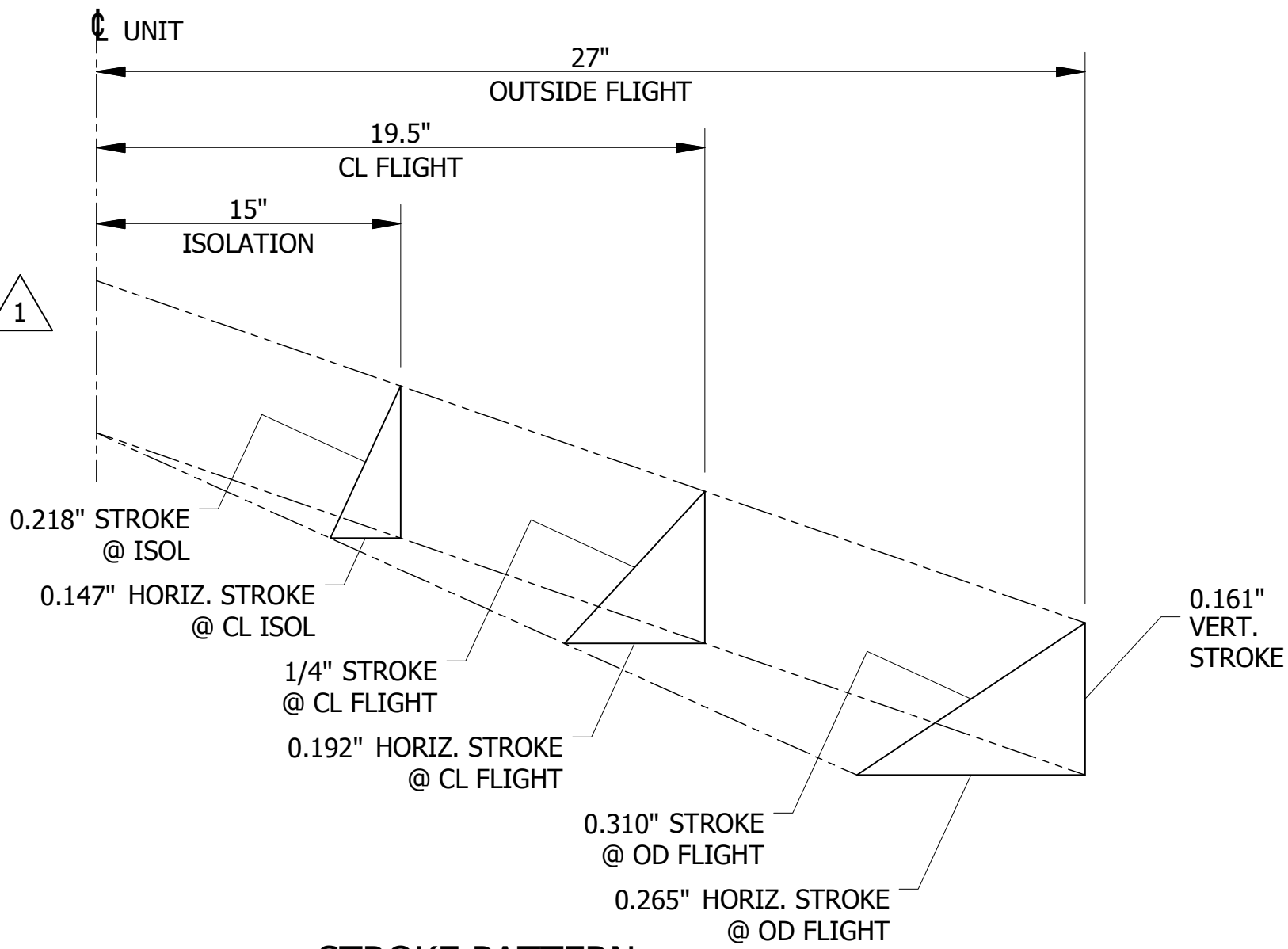


SN29101-BOM (ITEM A101)  
VIEW @ 270°  
SCALE 1 : 16

ISOLATION SPRING INFORMATION					
ISOLATION LOCATION	NUMBER OF ISOL. SPRINGS	SPRING P/N	EMPTY STATIC REACTION	VERT. DYNAMIC LOAD ±	TORSIONAL DYNAMIC LOAD ±
TOP	1	110464	4868 lbs.	+/-415 lbs.	0 lbs.
BOTTOM	3	130271	1622 lbs.	+/-178 lbs.	+/-725 lbs.
COMPRESSED HEIGHT (EMPTY)					
9 1/16 in.					
4 7/8 in.					

REFERENCE DRAWINGS	
CLEANING AND FINISHING SPEC.	1-61334-SP

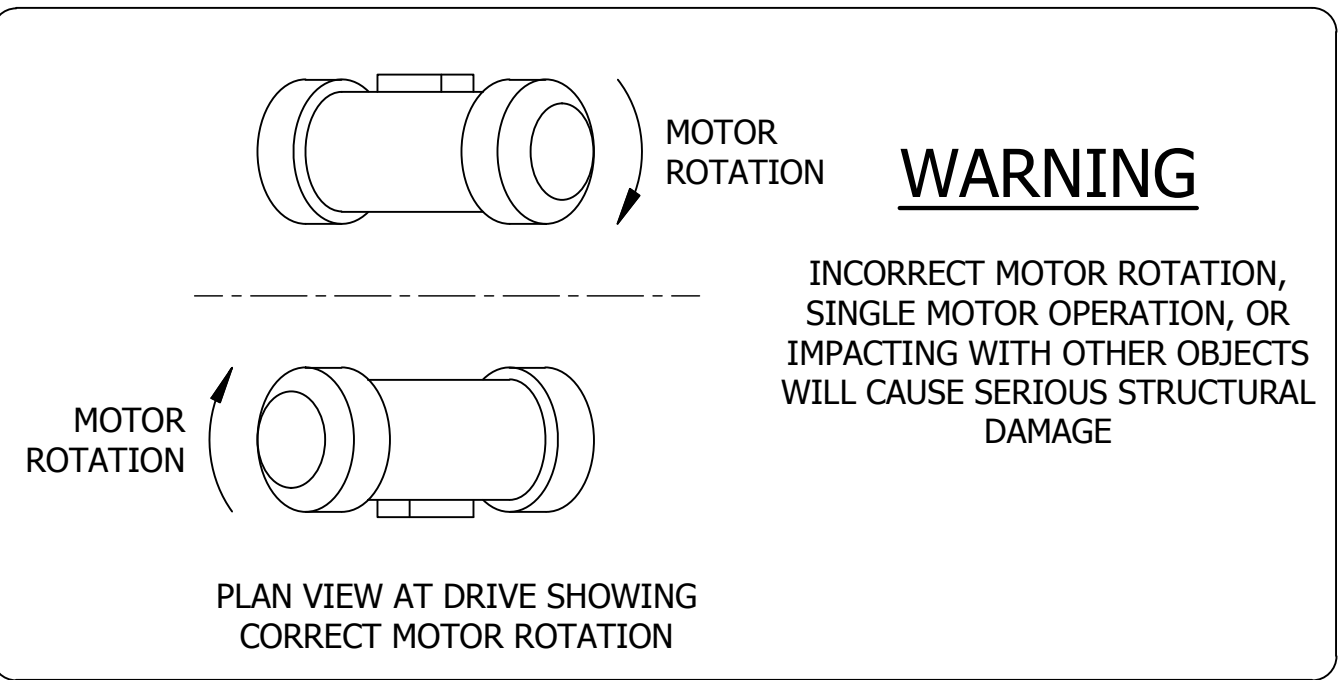
OPERATIONAL DATA	
OPERATING SPEED: 895 RPM	
STROKE @ C.L. OF FLIGHT: 1/4"	
ANGLE OF ATTACK @ CL. OF FLIGHT: 40°	
TOTAL TOWER WEIGHT: 3952 lbs.	
TOTAL DRIVE WEIGHT: 2447 lbs.	
TOTAL ASSEMBLED WEIGHT: 8458 lbs.	
D.C. BRAKE IS REQUIRED AND IS TO BE SUPPLIED BY OTHERS	
NOTE: REFER TO INSTALLATION AND OPERATION MANUALS FOR PROPER INSTALLATION PROCEDURES	



STROKE PATTERN

DESIGN DATA

Material:	Mixed Nuts, Popcorn/Nut Mix, Popcorn
Capacity:	15 kg/min Mixed Nuts 6.53 kg/min Popcorn/Nut Mix 0.42 kg/min Popcorn 35 PCF Mixed Nuts 18.6 PCF Popcorn/Nut Mix 1.2 PCF Popcorn
Bulk Density:	≈ 1/4"
Crumb Size:	Dry
Moisture Content:	70°F
Material Inlet Temperature:	180°F Mixed Nuts ≈155°F Popcorn/Nut Mix ≈145°F Popcorn
Material Discharge Temperature:	0.3 BTU/lb.°F (Assumed)
Specific Heat:	150 PSIG (regulated to 50 PSIG)
Steam Supply Pressure:	Indoors/Grade level
Site Location:	Screw Conveyor
Fed From:	Continuous Mixer
Discharge To:	



MOTOR DATA	
SET ROTATING WEIGHTS AT POS. 89%	
(2) MOTORS 4.56 hp 900 RPM, PN	
MOTOR SPEC'S.	
FRAME 85 TE NV NEMA B	
230/460 VOLT 3 PH 60 HZ	
WIRE FOR 460 VOLTS @ 6.5 AMPS/MOTOR	
REFER TO OPERATION & INSTALLATION MANUAL FOR CORRECT WIRING AND CORRECT MOTOR ROTATION. MOTORS MUST ROTATE IN OPPOSITE DIRECTIONS. IMPROPER MOTOR ROTATION OR OPERATING WITH ONE MOTOR ONLY WILL RESULT IN STRUCTURAL DAMAGE. MOTORS SUPPLIED BY CARRIER. MOTOR STARTER SUPPLIED BY OTHERS. BOTH MOTORS MUST BE OPERATED BY A COMMON STARTER, BUT EACH MOTOR MUST HAVE INDIVIDUAL CIRCUIT PROTECTION. SEE I.O. MANUAL FOR SUGGESTED METHOD. CARRIER REQUIRES THE USE OF A D.C. BRAKE.	

TMSP-5424-11'-0"- (2) 4.56 HP	
SERIAL No.	29101
CUSTOMER	GROUPE LECLERC SAINT-AUGUSTIN DEMAURES, QC
PURCHASE ORDER	0003388173
FILE NUMBER	17-CMON-41-0107-36
CERTIFIED BY: DJR 10/26/2017	

DR. JAD	DATE: 9/28/2017	<b>Carrier</b> Vibrating Equipment, Inc. Louisville, Kentucky 40233 www.carriervibrating.com
SCALE: AS NOTED		
CK. DJR		
P.E. DMK		
DWG. NO: 3-61334- 1	REV. 4	