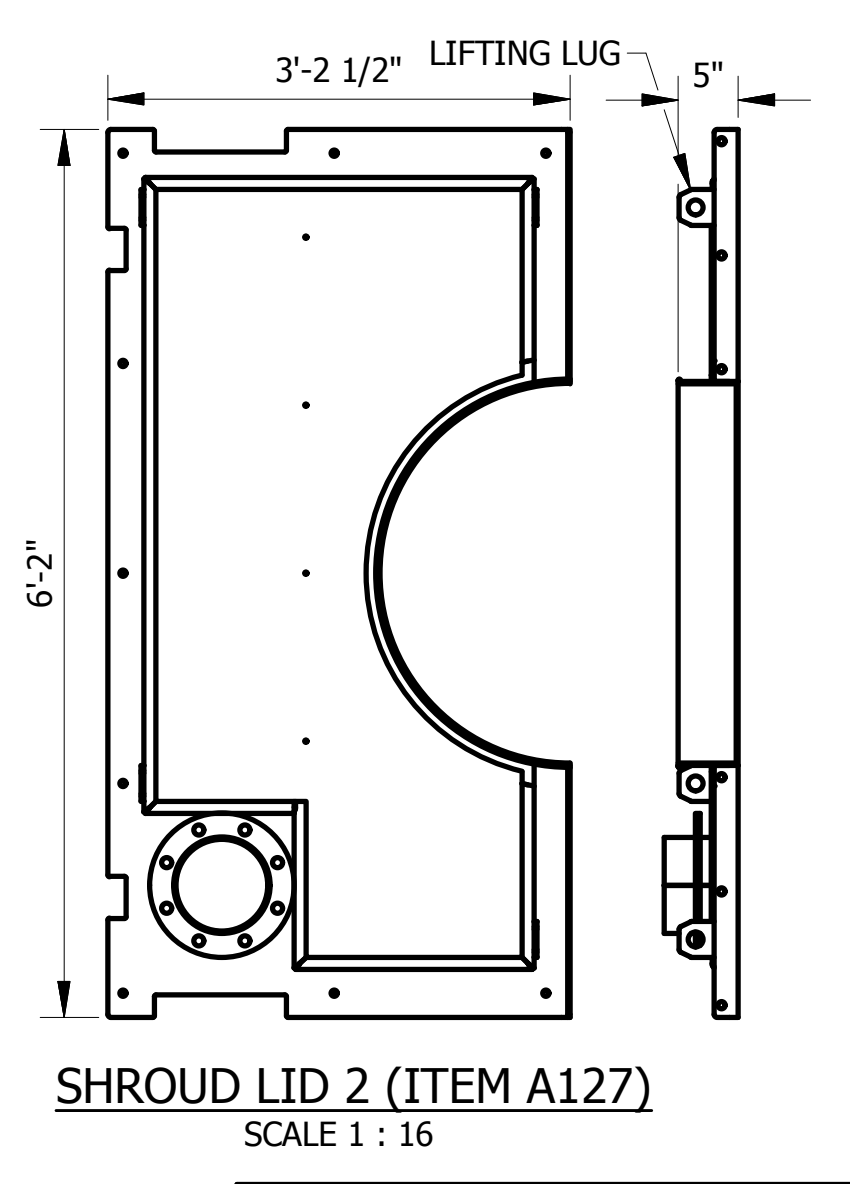
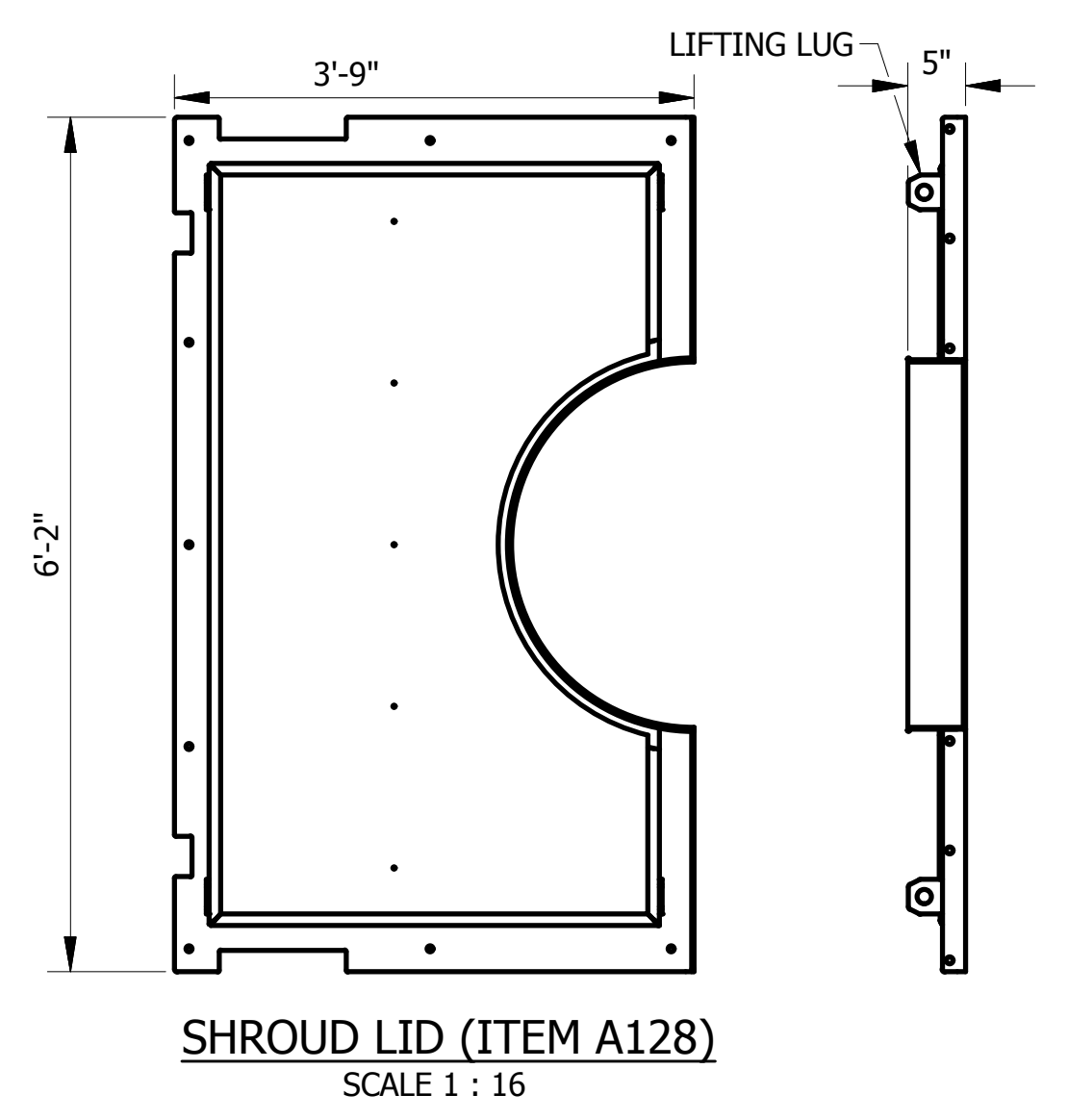
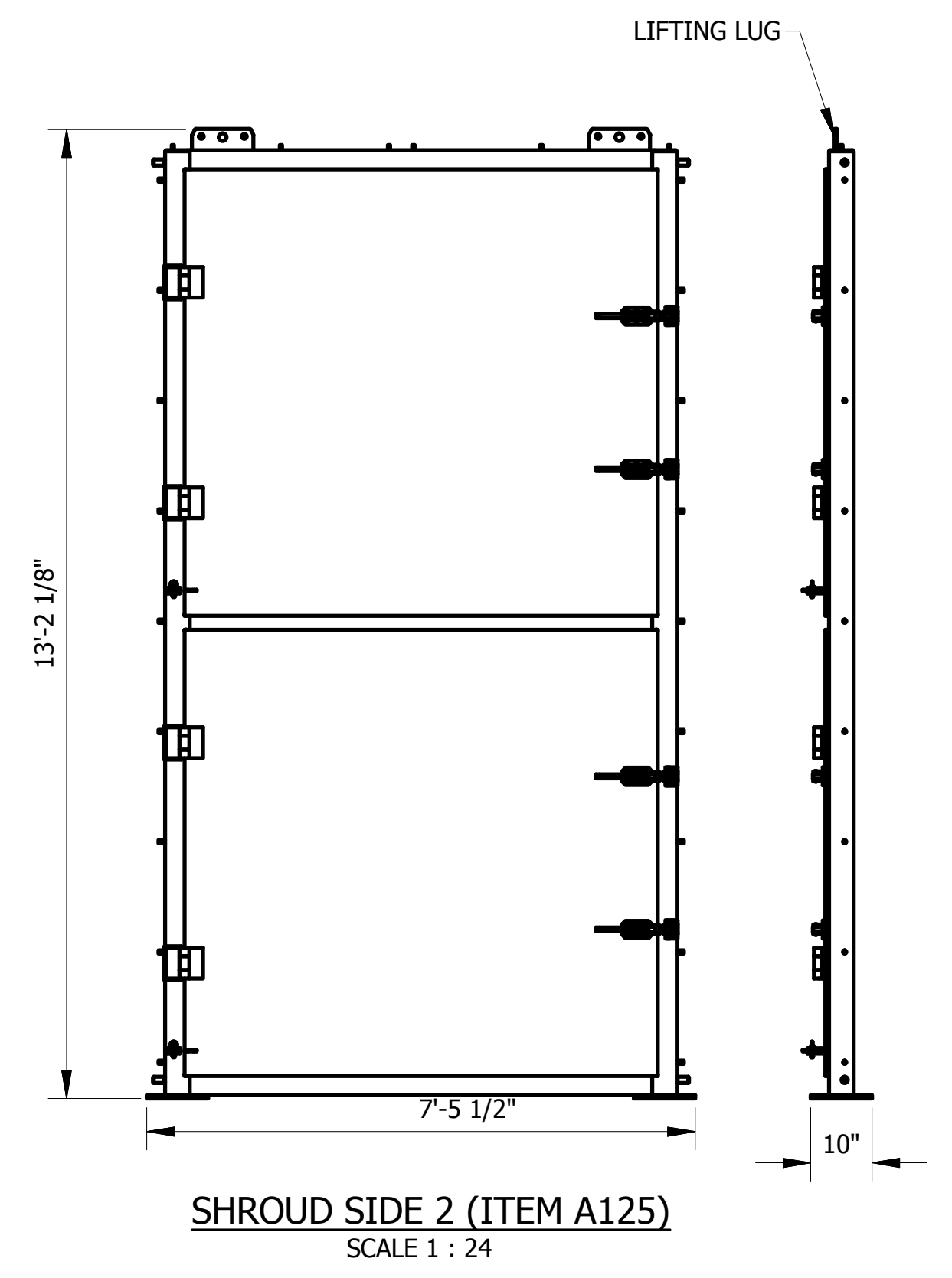
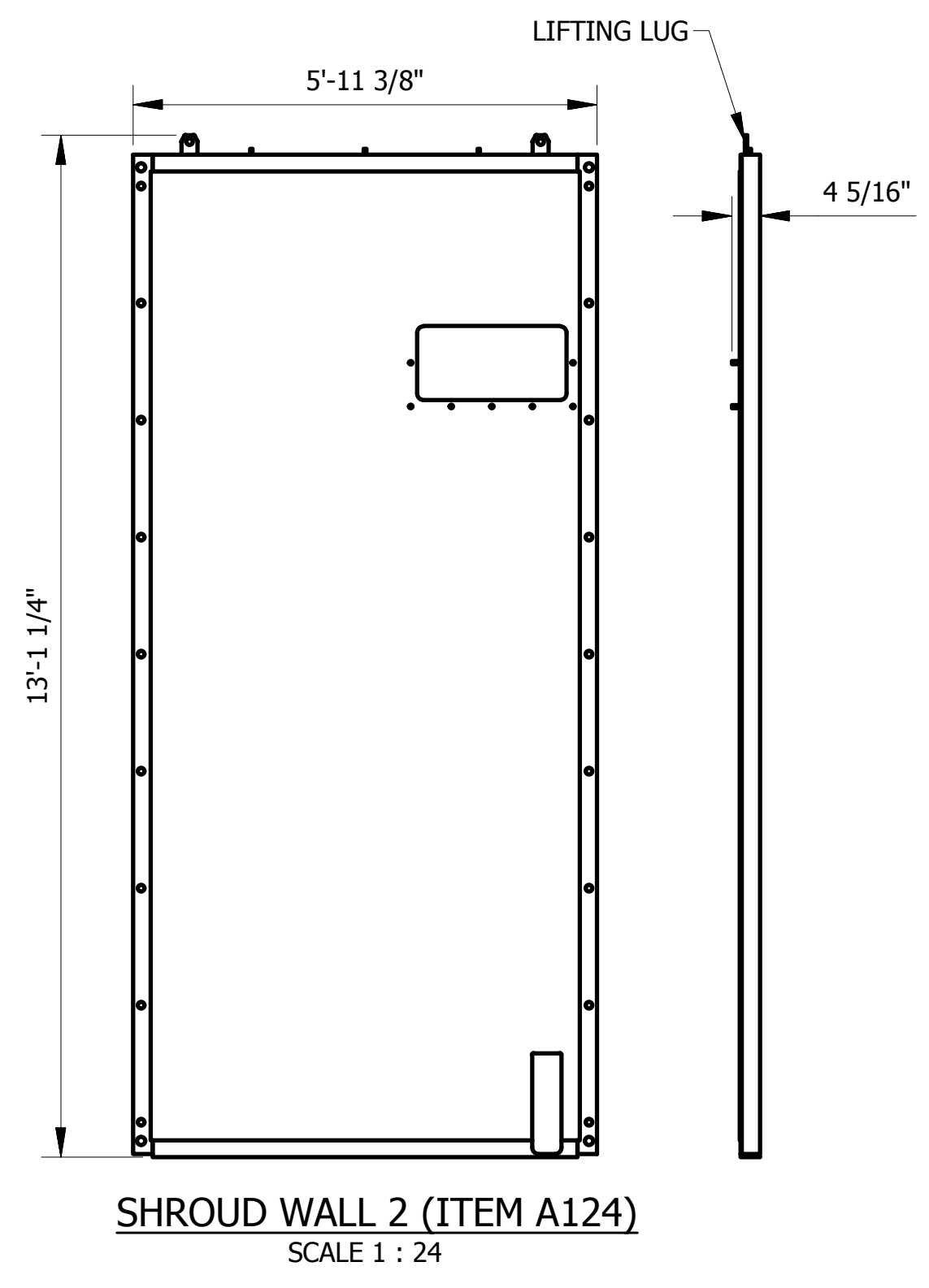
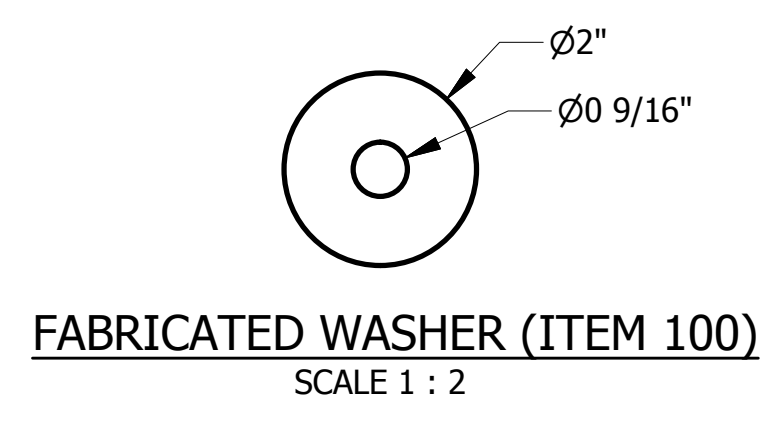
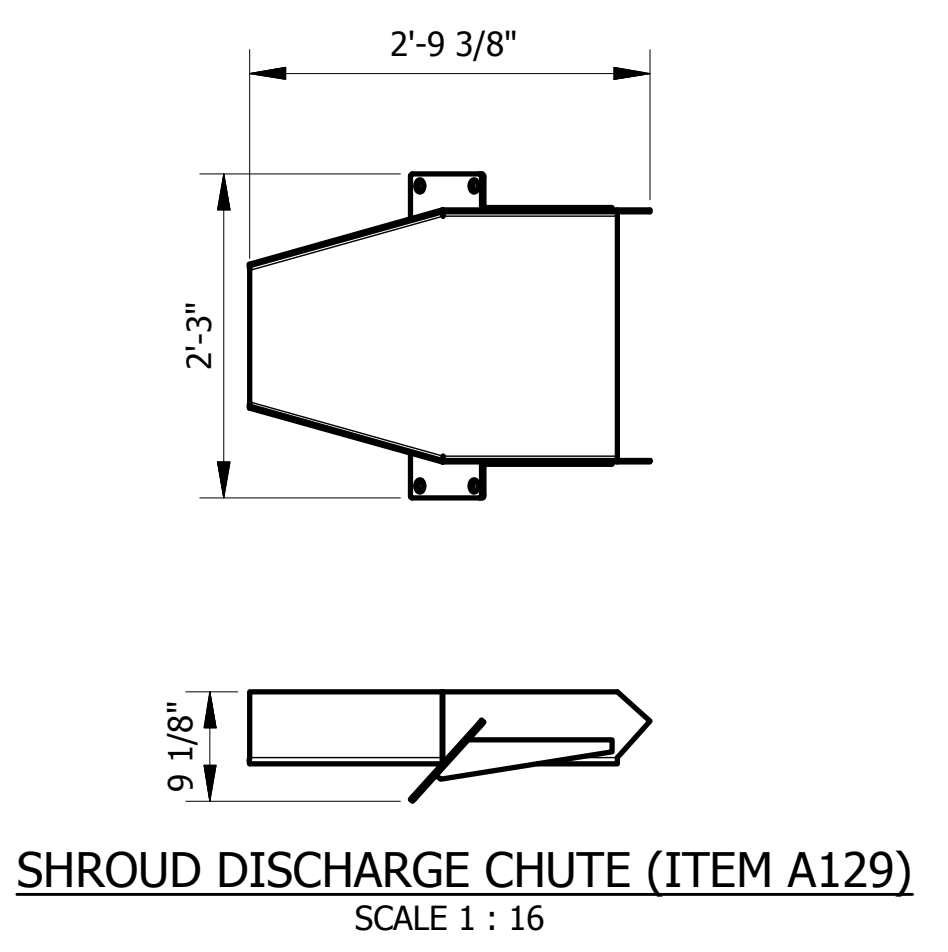
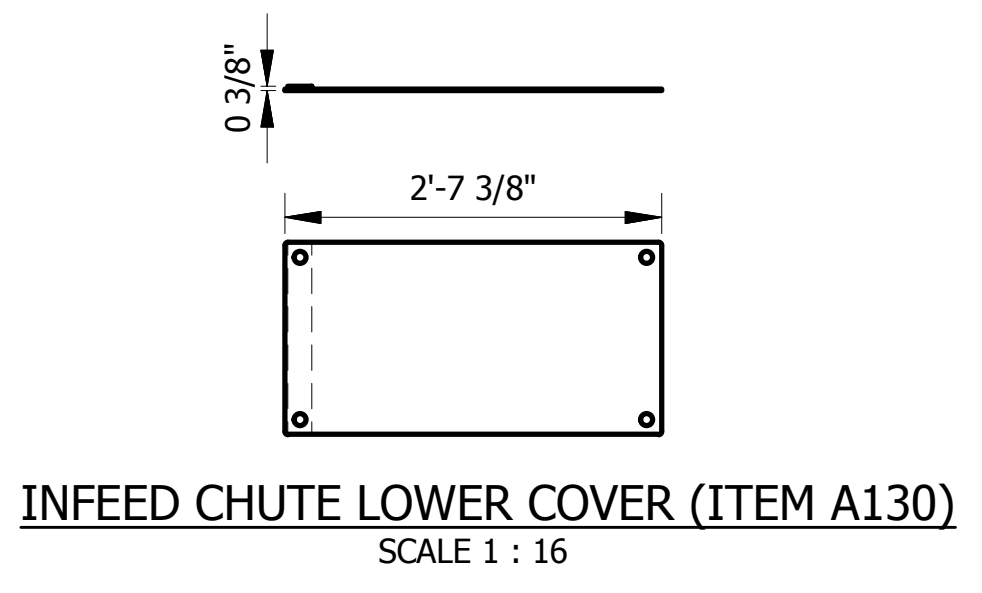
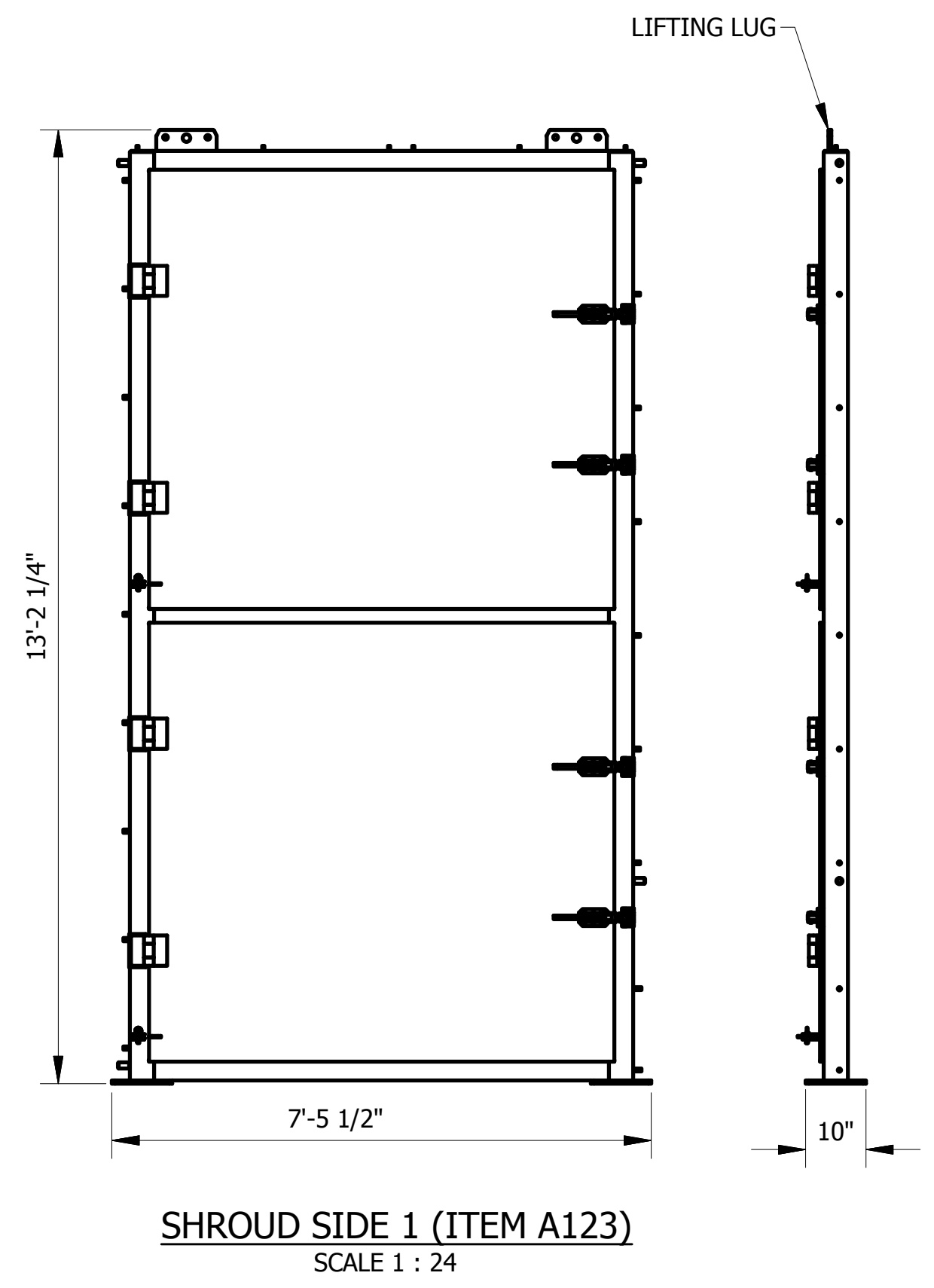
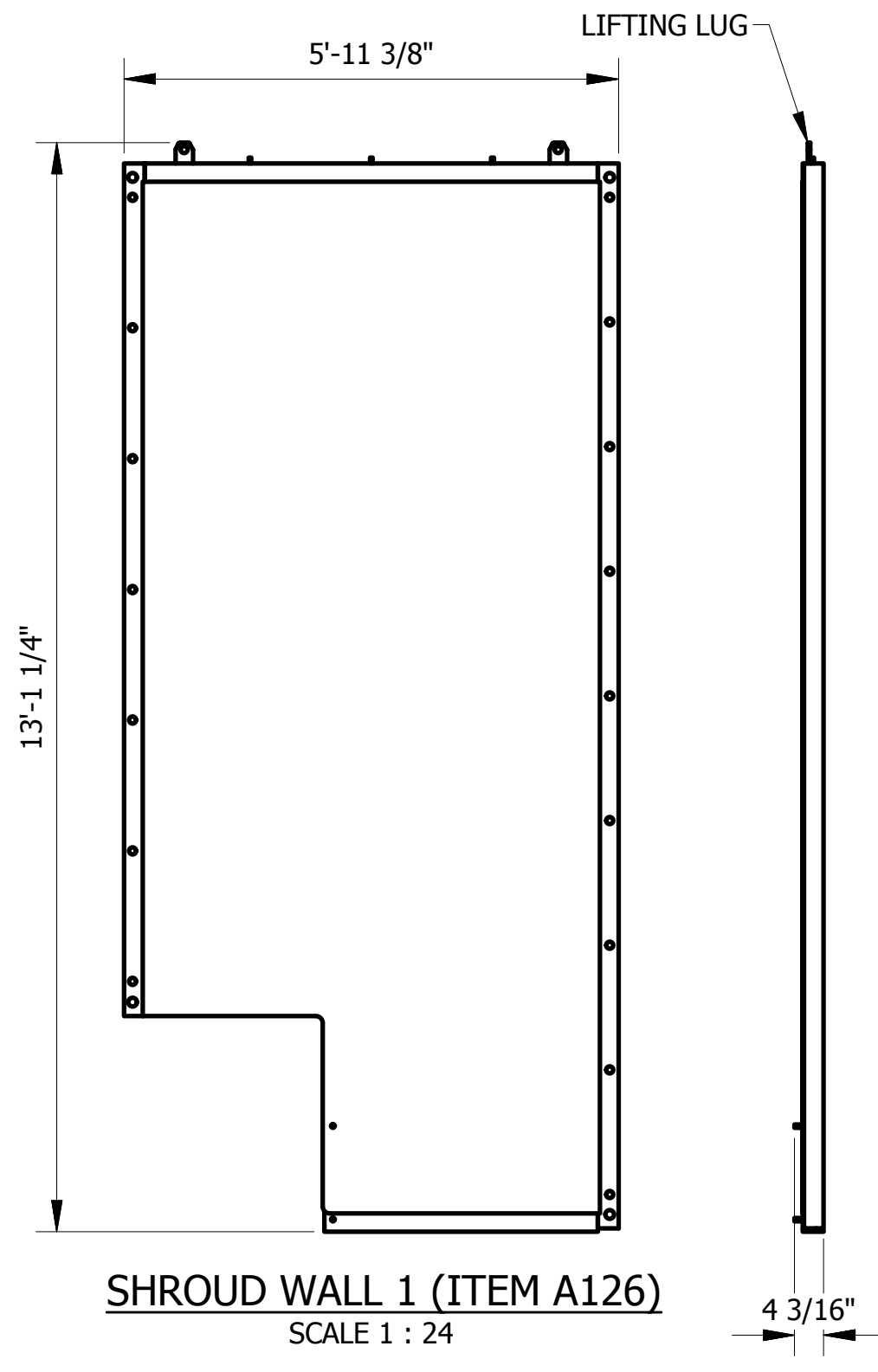


D
C
B
A

D
C
B
A



INDICATES REVISION NUMBER
USE "GENUINE CARRIER PARTS" TO
MAXIMIZE PERFORMANCE,
MINIMIZE DOWNTIME.
CALL 800-547-7278 OR EMAIL TO
ams@carriervibrating.com

All the information herein is confidential and has been transmitted for use solely in operating and maintaining this equipment. Reproduction or transmission of any part of this information to others or use by you for other purposes is unauthorized without the written consent of Carrier® Vibrating Equipment, Inc. Should this equipment be sold to a third party, all drawings and installation manuals are to be returned to Carrier® Vibrating Equipment, Inc. UNAUTHORIZED DUPLICATION, REPRODUCTION OR DISCLOSURE OF THIS INFORMATION IS A VIOLATION OF FEDERAL LAW.

SHROUD COMPONENTS	
SERIAL No.	29101-AE2
CUSTOMER	GROUPE LECLERC SAINT-AUGUSTIN DEMAURES, QC
PURCHASE ORDER PO No.	
FILE NUMBER	17-CMON-41-0107-36
CERTIFIED BY: DJR 12/7/2017	

DR. JAD DATE: 10/23/2017 SCALE: AS NOTED	 Vibrating Equipment, Inc. Louisville, Kentucky 40233 www.carriervibrating.com
CK. TEE	
P.E. DMK	
DWG. NO: 3-61364- 6	REV.