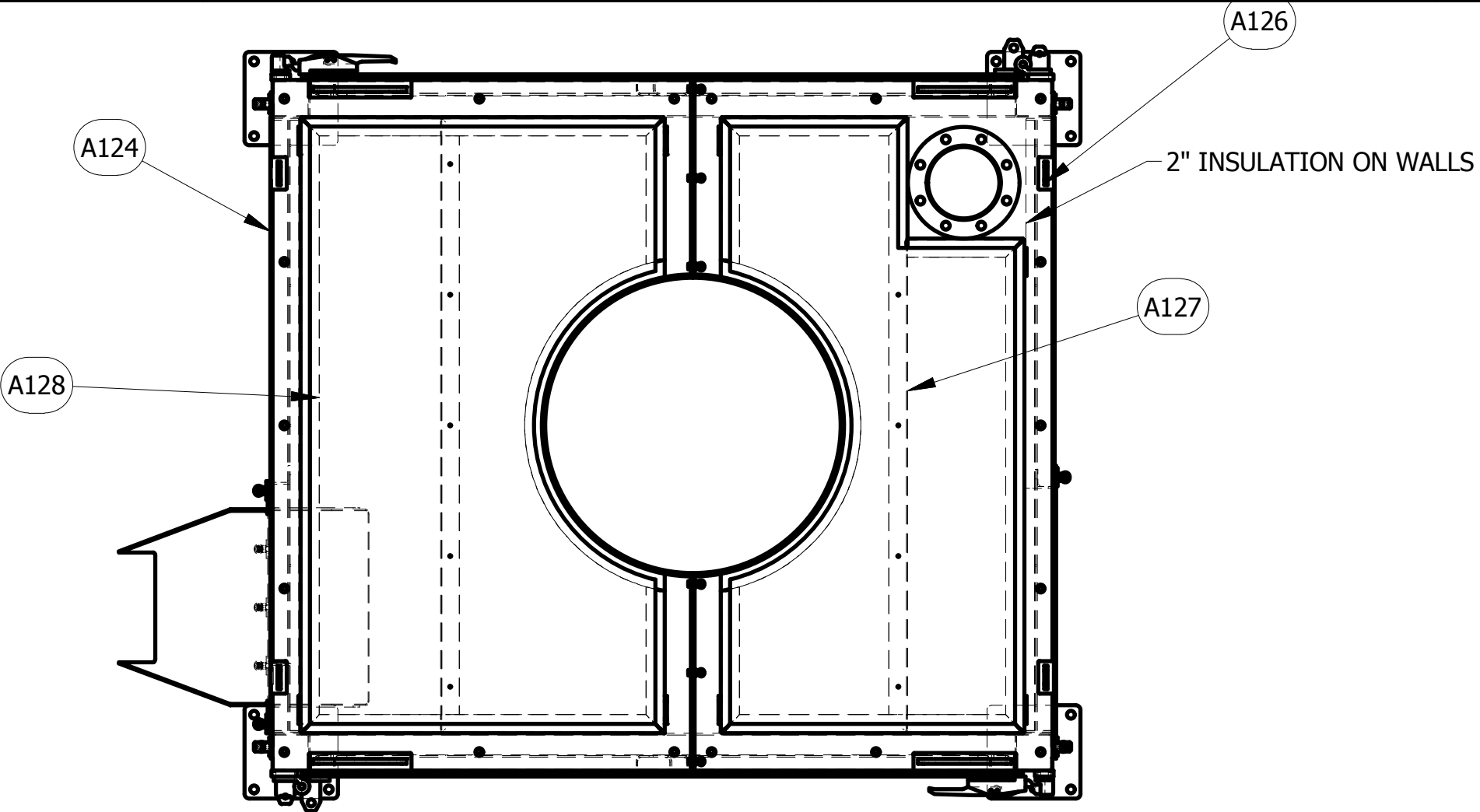


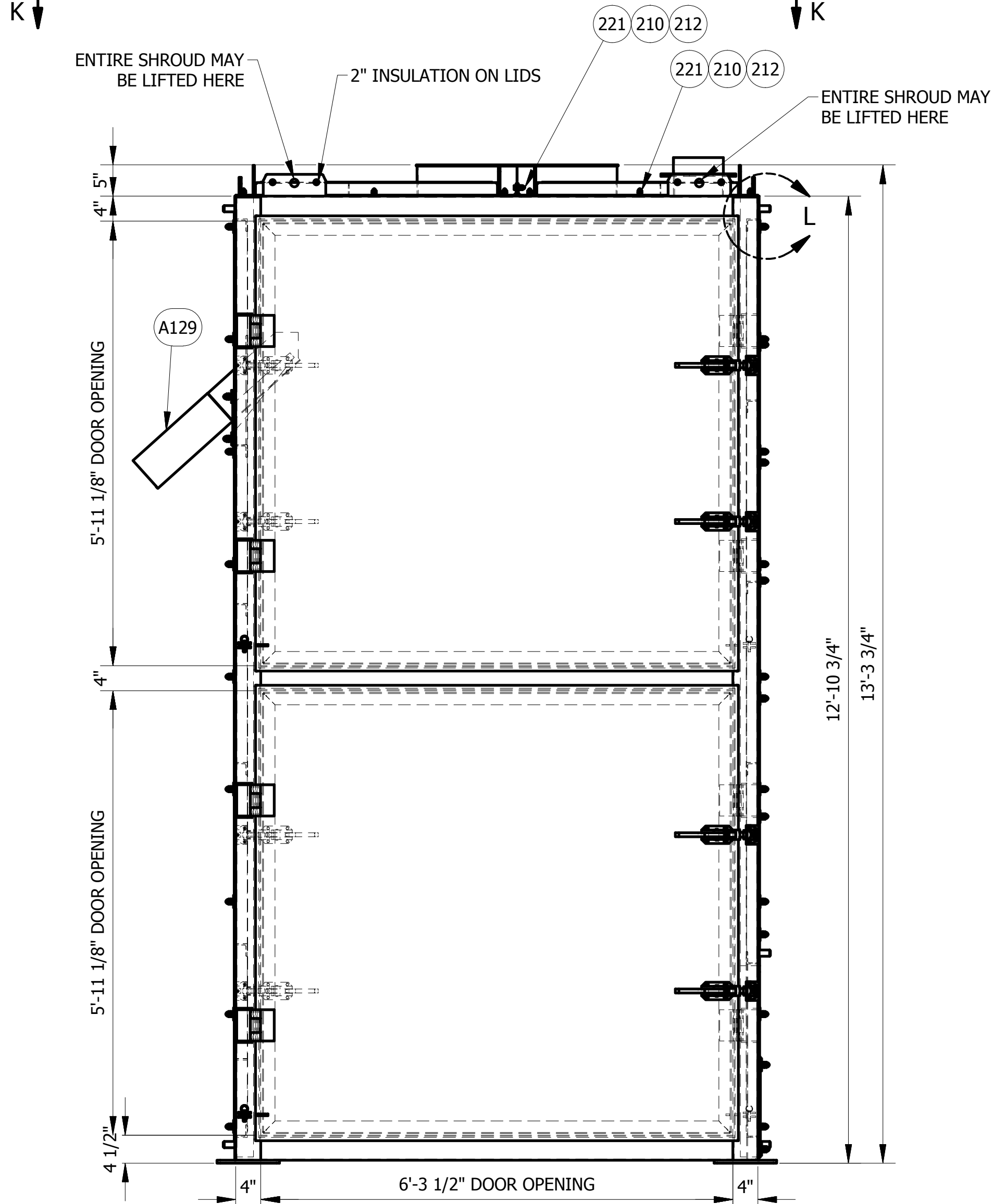
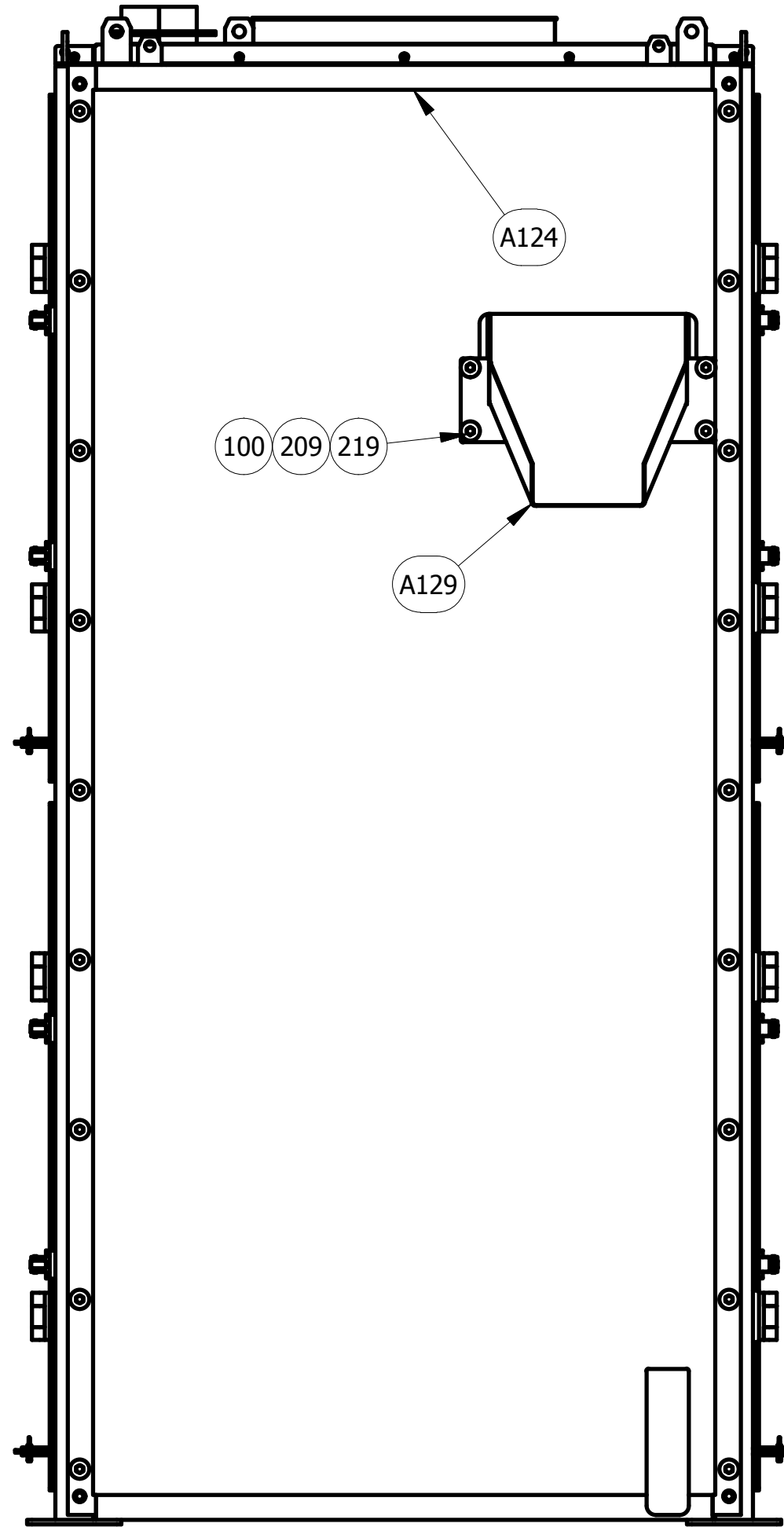
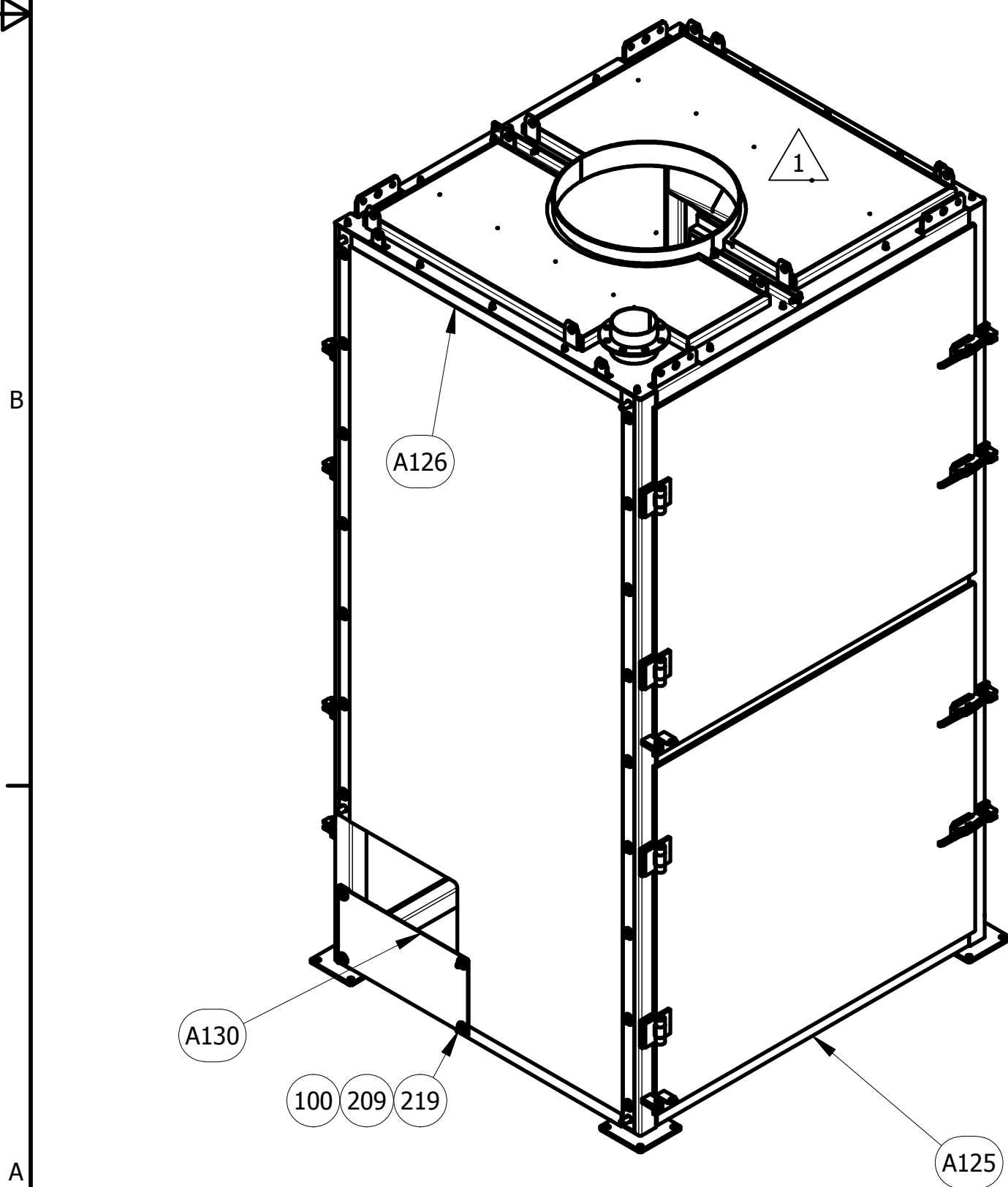
DETAIL L
TYPICAL ATTACHMENT OF
WALL TO SHROUD
SCALE 3 : 16



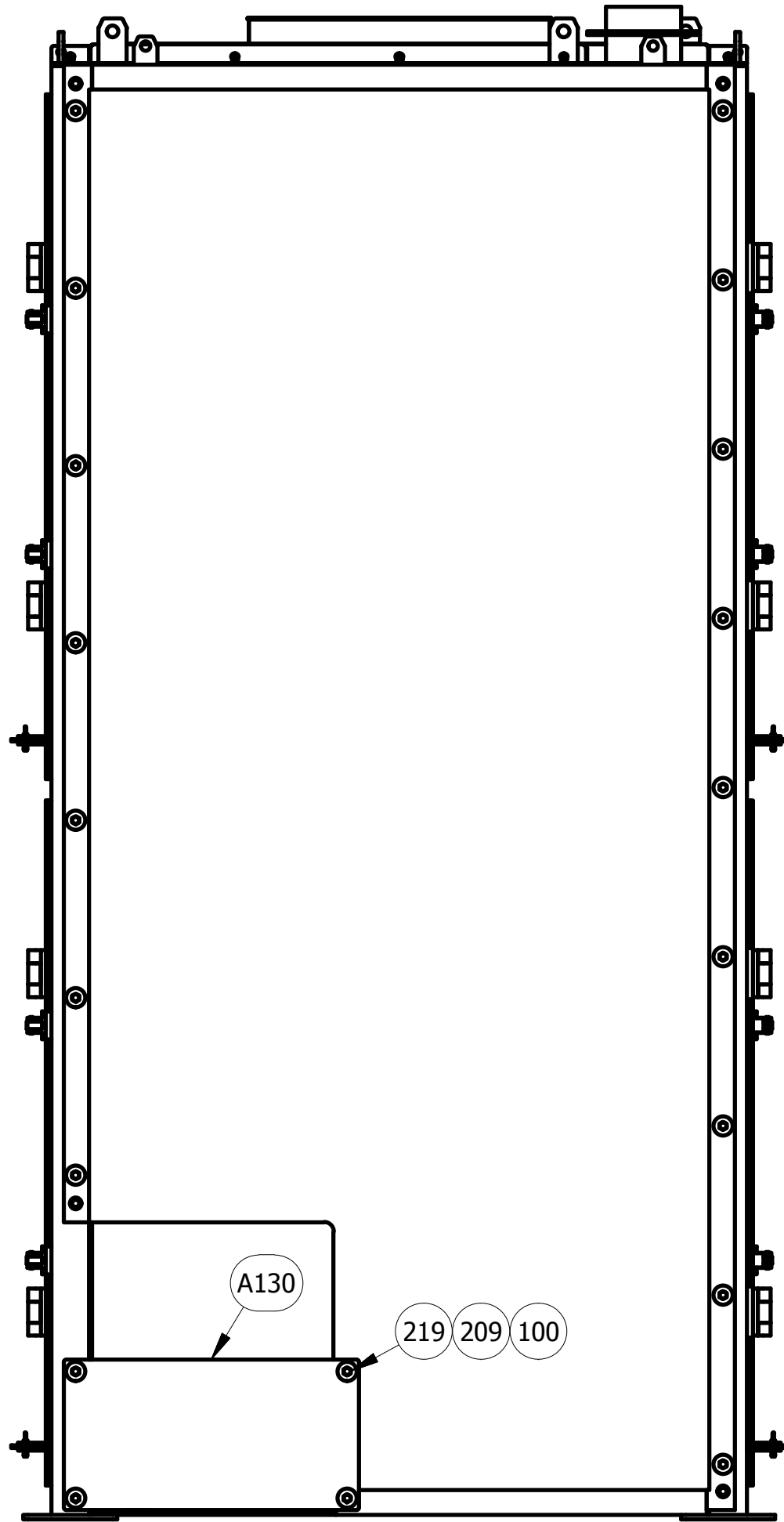
VIEW K-K
SCALE 1 : 16

PARTS LIST					
REV	ITEM	QTY	PART #	DESCRIPTION	WT. (lbs.)
	100	45	1000037756	FABRICATED WASHER	.2
	209	45	150450	HEX NUT 1/2 - 13 UNC	.0
	210	24	156534	HEX NUT 3/8 - 16 UNC	.0
	211	6	158892	HHCS 3/8-16 UNC - 1.25	.1
	212	30	160095	WASHER STRUCTURAL - 3/8	.0
	219	45	159969	1_2- 13 ACORN NUT 18-8	.1
	221	24	159637	3_8 - 16 ACORN NUT 18-8	.0
	A123	1	1000039753	SHROUD SIDE 1	1893.0
	A124	1	1000037705	SHROUD WALL 2	738.0
	A125	1	1000039781	SHROUD SIDE 2	1893.0
	A126	1	1000037720	SHROUD WALL 1	684.4
	A127	1	1000037731	SHROUD LID 2	244.8
	A128	1	1000037747	SHROUD LID	281.8
	A129	1	1000037757	SHROUD DISCHARGE CHUTE	49.4
	A130	1	1000037761	INFEED CHUTE LOWER COVER	21.7

NOTE: USE NEVER-SEIZE
OR EQUIVALENT LUBRICANT
ON STAINLESS STEEL HARDWARE



SHROUD ASSEMBLY (ITEM A117)



INDICATES REVISION NUMBER

USE "GENUINE CARRIER PARTS" TO
MAXIMIZE PERFORMANCE,
MINIMIZE DOWNTIME.
CALL 800-547-7278 OR EMAIL TO
ams@carriervibrating.com

1	ADDED VIEWS FOR INFORMATION	12/4/17	JAD
REV	DESCRIPTION	DATE	NAME
	REVISION HISTORY		

All the information herein is confidential and has been transmitted for use solely in operating and maintaining this equipment. Reproduction or transmission of any part of this information to others or use by you for other purposes is unauthorized without the written consent of Carrier® Vibrating Equipment, Inc. Should this equipment be sold to a third party, all drawings and installation manuals are to be returned to Carrier® Vibrating Equipment, Inc. UNAUTHORIZED DUPLICATION, REPRODUCTION OR DISCLOSURE OF THIS INFORMATION IS A VIOLATION OF FEDERAL LAW.

SHROUD ASSEMBLY	
SERIAL No.	29101-AE2
CUSTOMER	GROUPE LECLERC SAINT-AUGUSTIN DEMAURES, QC
PURCHASE ORDER PO No.	
FILE NUMBER	17-CMON-41-0107-36
CERTIFIED BY: DJR 12/7/2017	

DR. JAD DATE:10/23/2017 SCALE: AS NOTED	Carrier Vibrating Equipment, Inc. Louisville, Kentucky 40233 www.carriervibrating.com
CK. TEE	
P.E. DMK	
DWG. NO: 3-61364- 3	REV. 1