

Waterguy
Water Equipment Company™

WS200 Bottling Machine

SANITIZING BOTTLES: WATERGUY WS200 sanitizing procedures meet and exceed all state sanitizing requirements with heated temperature controlled wash by high-velocity jets up to 150 degrees Fahrenheit for both the outside and double washing of the inside with addition of 100ppm chlorine water solution in built in stainless steel wash tank for 1 1/2 minutes to insure multi-use bottle sanitizing. Dual rinses by high-velocity jets from stainless steel rinse tank for an additional 1 1/2 minutes to insure proper rinsing of containers.

Troubleshooting

Bottles wont advance when put in:

- 1- Bottle sensor defective or not aligned properly**
- 2- Air is not on to machine**
- 3- Water is not in wash tanks**
- 4- Tank water level sensor defective**

Bottles don't turn in wash cycle:

- 1- Wash tubes out of alignment**
- 2- pump not pumping water**

Bottles don't align under filler:

- 1- Adjust filler tube**
- 2- align bottle chair cradle arms**

Bottles not coming clean:

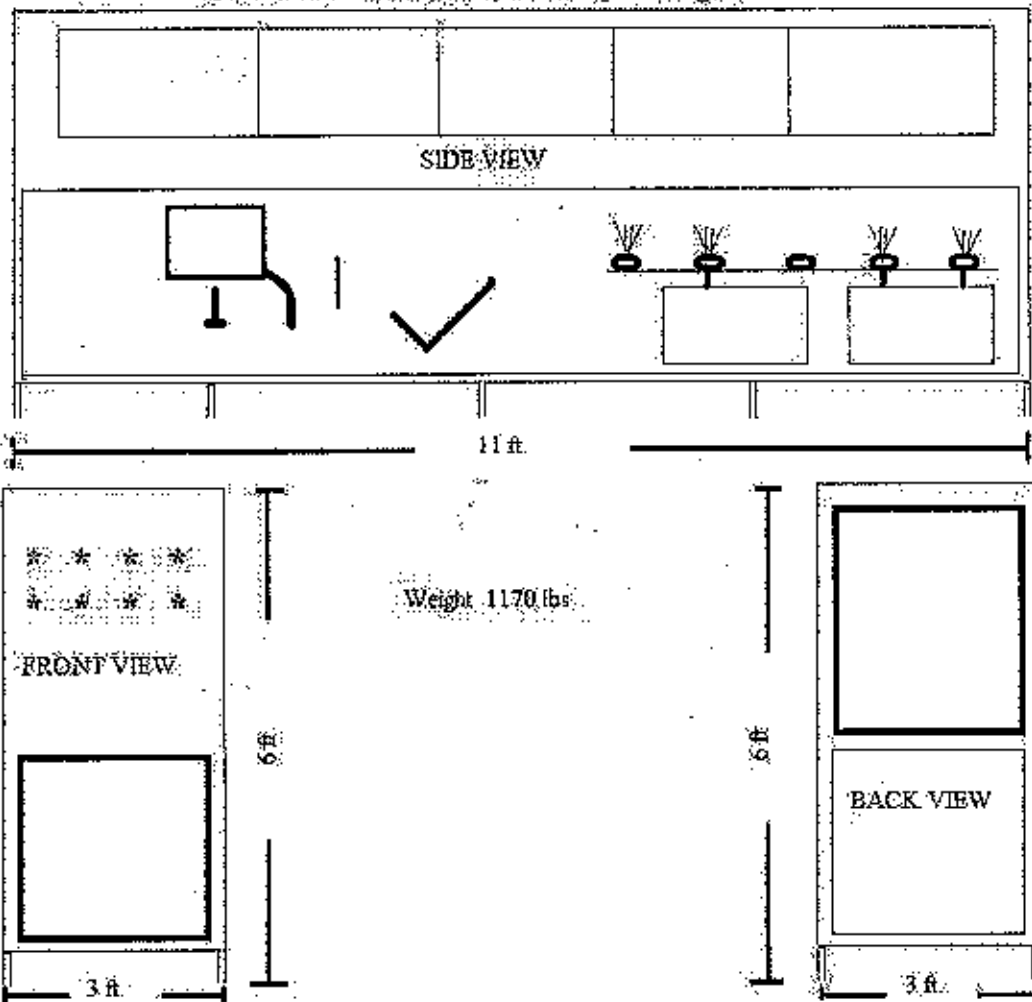
- 1- bottle is too dirty & must be hand pre washed before putting in machine**
- 2- wash pumps not running**
- 3- no wash detergent, bleach etc in wash tank**

Caps not coming down shute properly:

- 1- too many caps in cap bin**
 - 2- use manual cap sorting button when needed**
 - 3- cap bin out of adjustment - caps should barely fit under side edges - adjust outside of bin lower in this case**
 - 4- caps are kept in warm environment and tabs bend too easy**
- Store caps in cool to cold environment**

if you think you have one. This machine is designed to be ran with consecutive bottles being placed in it. Try to keep it full of bottles and it will run smoother. Stay patient and you will be a expert in no time.

WS 200BPH Automatic Bottling Machine



THE
WATER
ST  **RE**

Property of THE WATER STORE - Canal Winchester, Ohio U.S.A. - All Rights Reserved

Machine wont run:

- 1- no power
- 2- no water
- 3- bad heater
- 4- bad fuse
- 5- bad wash tank water level sensor
- 6- no air
- 7- emergency stop button pushed in

Bottle don't fill required amount:

- 1- adjust filling time --- + for mill fill - for less ---- push time adjustment for filling button for increase or decrease filling time
- 2- not enough water flow to machine - 35gpm flow required for each filling pump
- 3- bottle not aligning under fill tube

No hot water for wash:

- 1- defective heater
- 2- defective temp control or control set wrong

Curtains wont come down:

- 1- air ram getting no air
- 2- water in air line tube

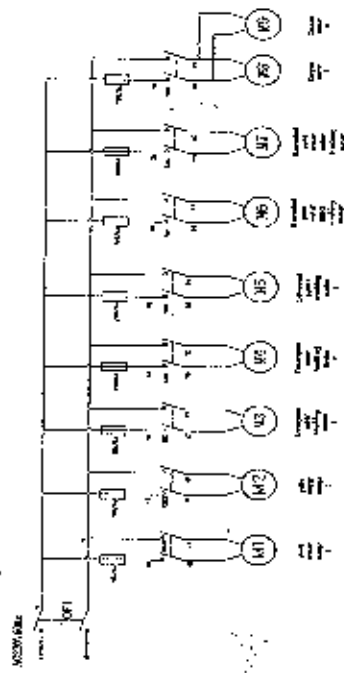
Chain and/or curtains move too fast:

- 1- water in air lines

ALWAYS KEEP MACHINE CLEAN AND THE POWER, WATER AND AIR TURNED OFF WHEN NOT IN USE.

BLOW WATER OUT OF AIR LINES ON A REGULAR BASIS TO PREVENT AIR RAMS FROM OPERATING IMPROPERLY (ex. Every 7 days)

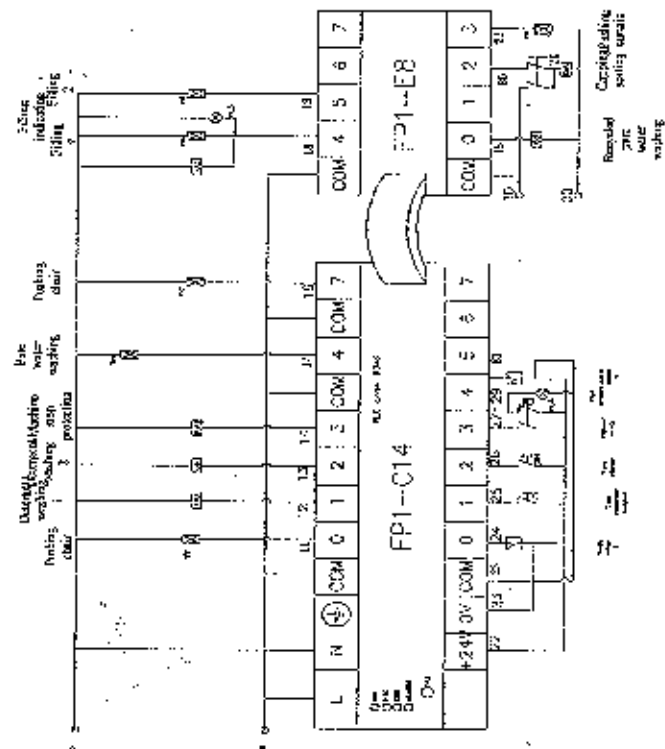
ONLY USE EMERGENCY STOP BUTTON FOR EMERGENCIES. MACHINE MAY CYCLE IMPROPERLY AFTER USING IT AFTER A EMERGENCY STOP HAS BEEN USED. LET MACHINE CYCLE 4 OR 5 TIMES AFTER THIS TO LET IT GET IN PROPER SEQUENCE.

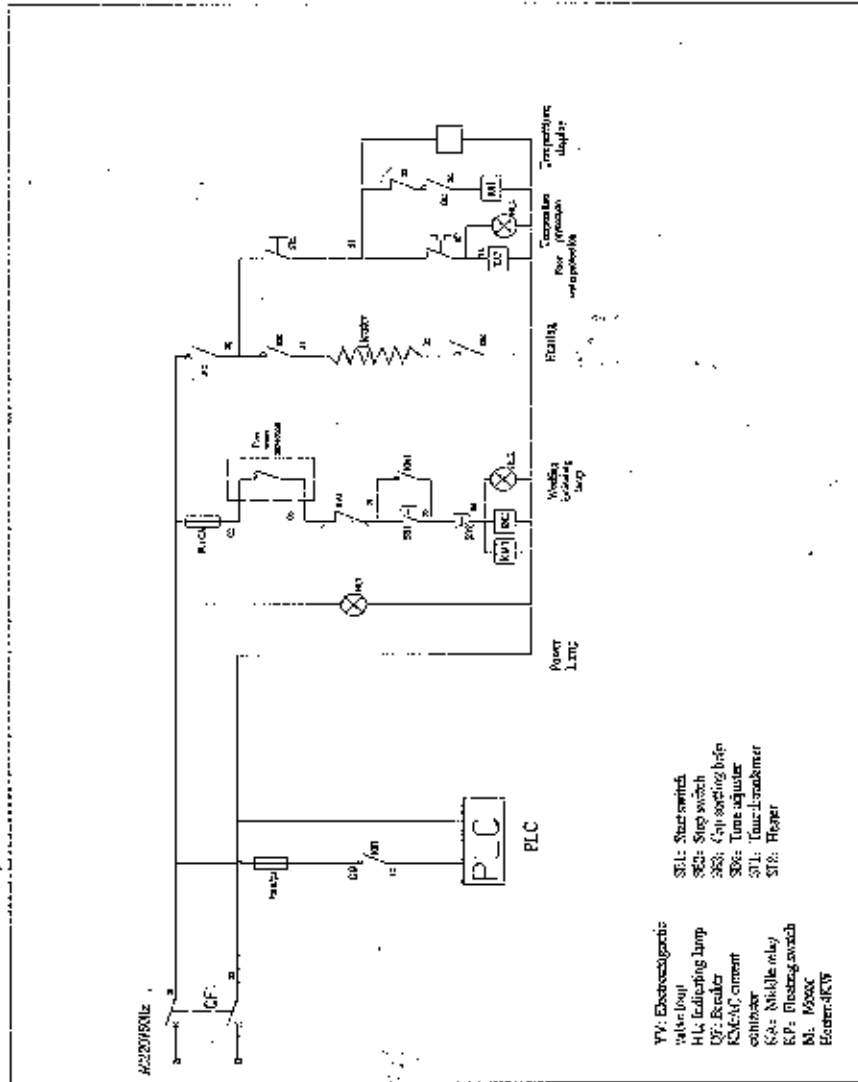


T.V. Domestique
 M1: Moteur
 M2: Moteur
 M3: Moteur
 M4: Moteur
 M5: Moteur
 M6: Moteur
 M7: Moteur
 M8: Moteur
 M9: Moteur
 M10: Moteur
 M11: Moteur
 M12: Moteur

M1: Moteur
 M2: Moteur
 M3: Moteur
 M4: Moteur
 M5: Moteur
 M6: Moteur
 M7: Moteur
 M8: Moteur
 M9: Moteur
 M10: Moteur

M11: Moteur
 M12: Moteur





VV: Elektroschaltgerät
 W: Vorwiderstand
 H: Leuchtorgel
 QF: Schalter
 KM: Magnetventil
 K: Kontakt
 K1: Nulleinrichtung
 K2: Freilaufschalter
 M: Motor
 E: Erdung

S1: Startschalter
 S2: Stoppschalter
 S3: Einbauschalter
 S4: Taster
 S5: Taster
 S6: Taster

200 BPH Automatic 5 Gallon Bottling Machine

1) Machine Startup

Bleed air from lines using buttons on air solenoids inside control panel, making sure chain system, bottle pushing chair and curtain system are all working properly before continuing. **Bleeding air in lines only needs done the very first time you use the machine.**

Fill water in wash/rinse tanks full by opening ball valve supplied on tank fill lines. Shut ball valves until changing water. Water changing in tanks should be done once per hour.

Note: Make sure drain valves are closed on drain when filling tanks.

Reminder: If at any time machine needs to be shut down for emergency, use the RED stop button provided on either side of machine.

Turn on electricity to machine. Machine power light should be on. If hot water is wanted, turn heating switch to on position and adjust temperature. This will take some time to arrive at hot temperatures (about 30 minutes). Now you are ready to turn start switch on. Machine pumps are now running and machine is ready to cycle. Cycling will begin as soon as bottles are entered into machine.

Machine will continue to cycle as long as bottles are fed into the system before it advances without a bottle at start of system. This will indicate to machine that you are done and machine will advance all bottles already entered through the fill cycle.

200 BPH Automatic 5 Gallon Bottling Machine

After watching machine cycle the first ten bottles, adjustments can now be made to filling tubes, cap chute placement, bottle filling levels, bottle guides, washing tubes, bottle chair, etc.

Reminder: If at any time machine needs to be shut down for emergency, use the RED stop button provided on either side of machine.

To stop machine normally, just let the last bottle stop filling and machine will automatically kick off. Then turn off power to machine. This is the best way to shut down the machine as the PLC will be in proper sequence. When shutting machine down with emergency stop, you may have to run 10 or more bottles through machine to get PLC in proper sequence after startup.

CAUTION: KEEP ALL WINDOWS AND ACCESS AREAS CLOSED OFF WHILE MACHINE IS HOOKED UP TO POWER.

CAUTION: NEVER REACH INSIDE MACHINE TO TAKE BOTTLE OUT UNTIL IT COMES TO THE END OF THE MACHINE. KEEP HANDS OUT OF INTERIOR OF MACHINE. INJURY OR DEATH COULD RESULT IF THIS IS NOT FOLLOWED.

USING YOUR MACHINE

Your water bottling machine is designed to fill and cap 5 gallon returnable water bottles.

Understand that this is not a hard machine to use once you get used to how it works. Understand that water bottling takes time to get efficient at. You should be feeling confident of what it takes to operate a efficient bottling operation after using the machine 5-10 times.

You should do several small runs of 30-50 bottles before you actually start production for resale. This will allow you to get used to how it works and what you should expect while bottling.

It is not uncommon for a bottle to not fill properly, a cap to get jammed in the cap shute and so forth. It is all part of bottling water. It happens at every bottling plant with every bottling machine. Don't hook everything up and then put 1 or 2 bottles in and expect it to do everything properly. Put 20 or so in a row and watch it operate. After a few runs you should be able to see what adjustments you need to make to the machine.

Always give yourself time to figure out your problem.