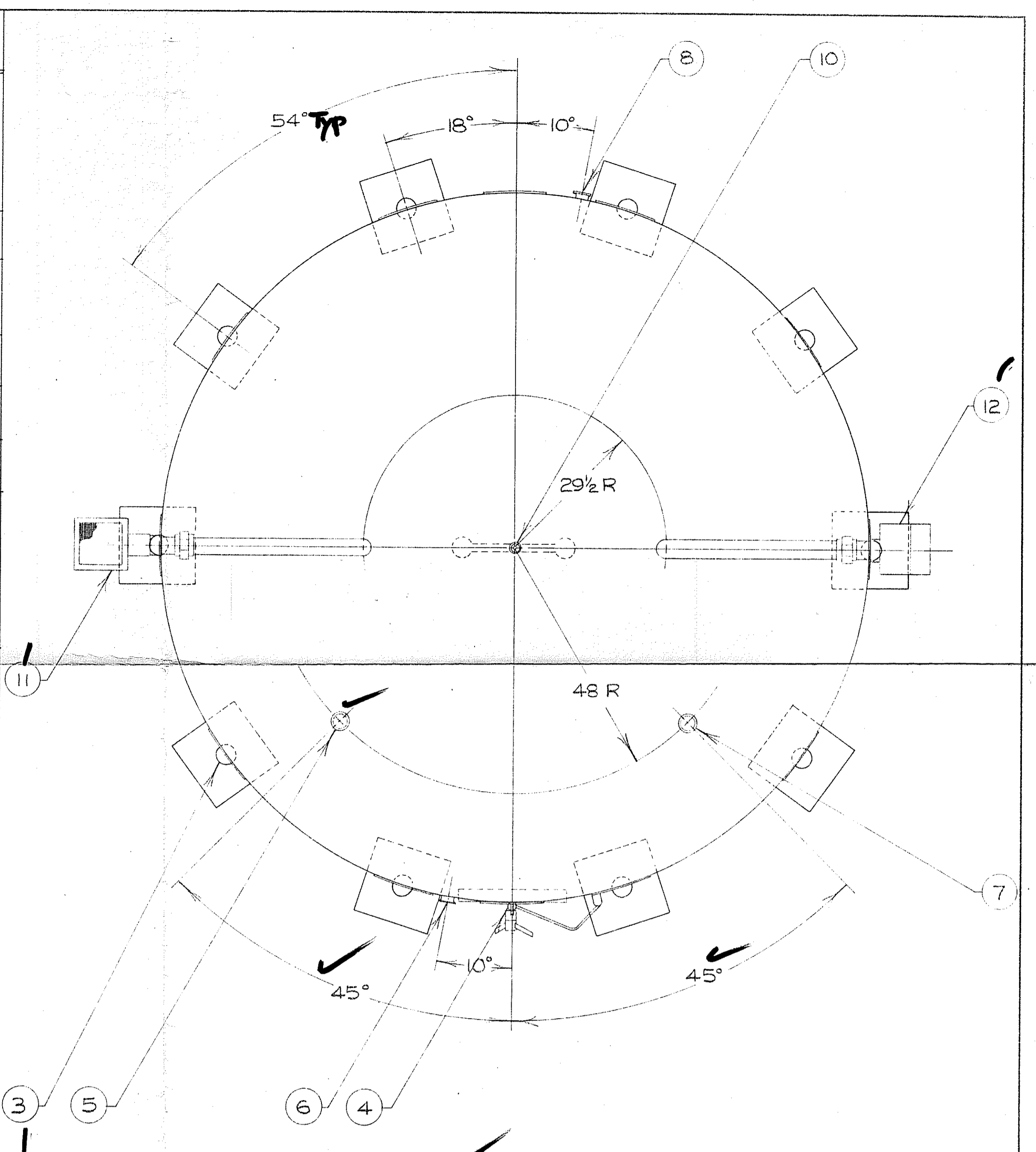
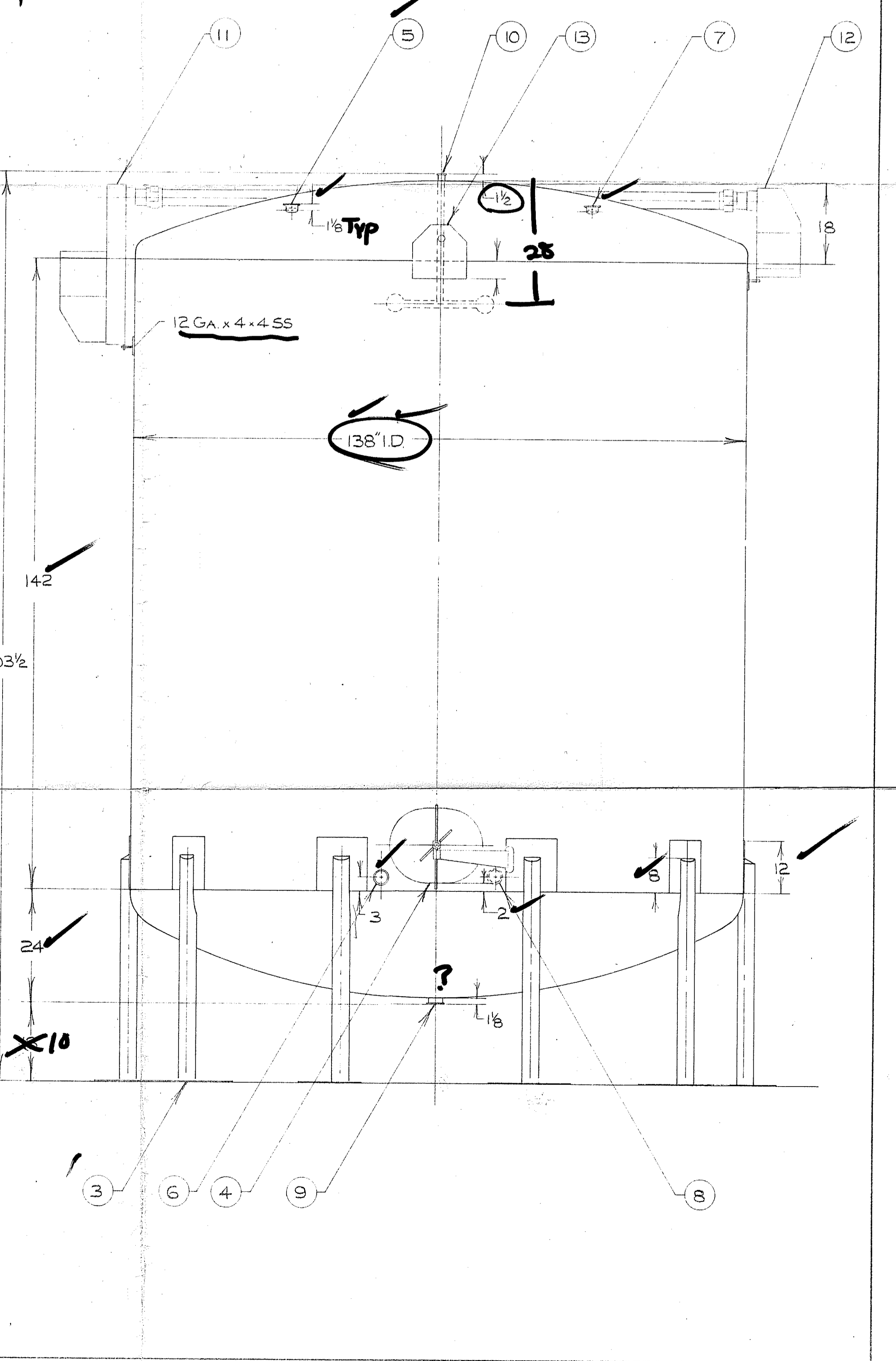


KEY	ITEMS	DESCRIPTION	Dwg No
1	HEADS	TOP HEAD: 12 GA. x 138" I.D. SPUN, FLANGED & DISHED 173" D.R., 3" KR, 18" DEEP T-304-SS #4 FIN I.S., 2B O.S. BOTTOM HEAD: 12 GA. x 138" I.D. SPUN, FLANGED & DISHED 138" DR, 2 KR, 24" DEEP T-304-SS #4 FIN I.S., #2B O.S.	
2	SHELL	12 GA. T-304-SS #4 FIN I.S., #2B O.S.	
3	SUPPORT	(10) 4" I.P.S. SCH 40 PIPE LEGS W/ 8 GA x 12 x 12 DOUBLER PLATES & 1/2" THK x 15" x 15" FLOOR PLATES T-304-SS	
4	MANHOLE	16 1/2" x 21" INSULATED, INSIDE CLOSING DOOR WITHOUT SAMPLE VALVE T-304-SS	
5	INLET	3" L14AM7 TRI-CLOVER FERRULE T-304-SS	
6	INLET	3" L14AM7 TRI-CLOVER FERRULE T-304-SS	
7	INLET	3" L14AM7 TRI-CLOVER FERRULE T-304-SS	
8	INLET	3" L14AM7 TRI-CLOVER FERRULE T-304-SS	
9	OUTLET	3" L14AM7 TRI-CLOVER FERRULE T-304-SS	
10	C.I.P.	(1) KLENZADE 1/2" SB-I DOUBLE SPRAY BALL UNIT WELDED IN W/ TRI-CLAMP CONNECTION T-304-SS	
11	STERILE CONDITIONER	AMERICAN ULTRAVIOLET STERILE CONDITIONER ABSOLUTE FILTER # SC-2-AB-10 SS W/ 3" I.P.S. SCH 40 NIP, 3" I.P.S. SCH 40 PIPE & 3" 150* THREADED UNION T-304-SS	
12	TANK VENT	AMERICAN ULTRAVIOLET TANK VENT ABSOLUTE FILTER # STX-10-AB-SS W/ 3" I.P.S. SCH. 40 NIPPLE, 3" I.P.S. SCH 40 PIPE & 3" 150* THREADED UNION T-304-SS	
13	LIFTING LUGS	(2) 1/4" THK x 12" x 12" LIFTING LUGS T-304-SS	



NOTE (1)
INSIDE WELDS GROUND SMOOTH & FLUSH TO A #4 FIN.
OUTSIDE WELDS GROUND SMOOTH NOT FLUSH,
DISCOLORATION REMOVED

NOTE (2)
ESTIMATED WEIGHT: 4,400*



Check print

KEY	DATE	NO.	REVISION

WALKER STAINLESS EQUIPMENT CO., INC.
ELROY, WISCONSIN 53628

WARRANTY:
Walker Stainless Equipment Co. warrants new tanks or equipment manufactured by us to be free from defects in material and workmanship under normal use and service for a period of 1 year after shipment from the factory. For breach of warranty of any kind, the measure of damages to be recoverable from Walker Stainless Equipment Co. shall be limited to repair or replacement of the part or equipment which examination discloses to the satisfaction of us to be defective or the payment of the price of making such repair or replacement at the option of the seller. This warranty is expressly in lieu of all other warranties, expressed or implied, and all other obligations and liabilities on our part. Any warranty of merchantability is expressly excluded. We neither assume nor authorize any other persons to assume for us any liability in connection with the sale of our products, and no other warranty will be honored unless in writing and signed by an officer of the corporation. This warranty shall not apply to any product of our manufacture which has been repaired or altered outside our factory, or which in our opinion has been subjected to misuse, negligence or accident. Seller will not assume any charge for repairs made during warranty by anyone other than Walker Stainless. Also seller assumes no liability or responsibility for transportation to and from repair point, nor any loss of materials to be repaired. This warranty does not cover components of other manufacturers beyond such warranty as is made by such manufacturer. Any action for breach of warranty shall be commenced within one (1) year of said breach or be forever barred.

All information including design details and dimensions contained herein are confidential and proprietary and must not be reproduced, disclosed to others, or used in the production of parts shown unless authorized in writing by Walker Stainless Equipment Company.

SCALE: 3/4" = 1'-0"
DATE: 1-29-81
(3) 10000 GAL VERT SINGLE SHELL SUGAR TANKS
9093,95,96 PO. 3503
DRAWN BY: CLB
REVIEWED: JTS
3420

NOTE - DO NOT SCALE THIS DRAWING!