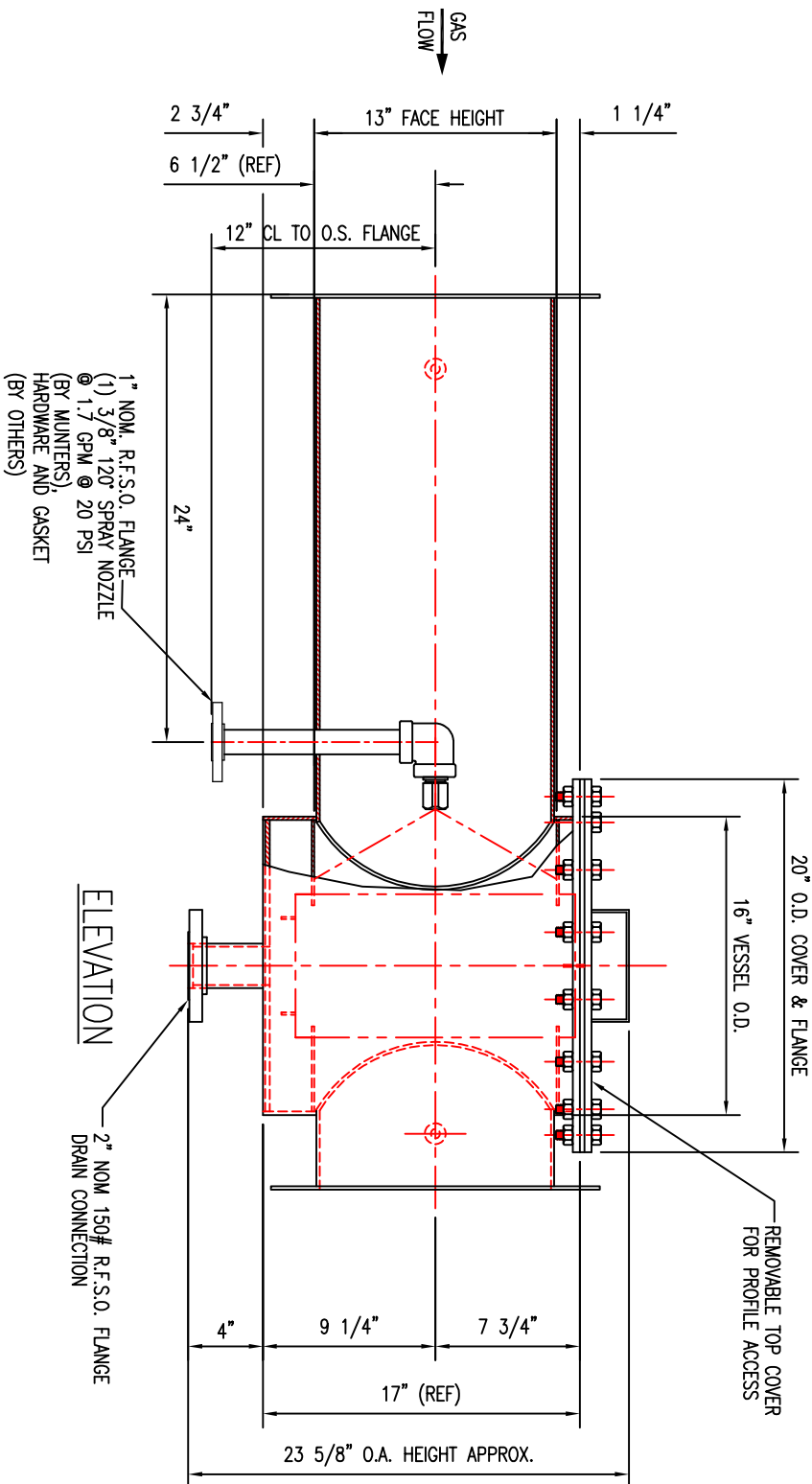
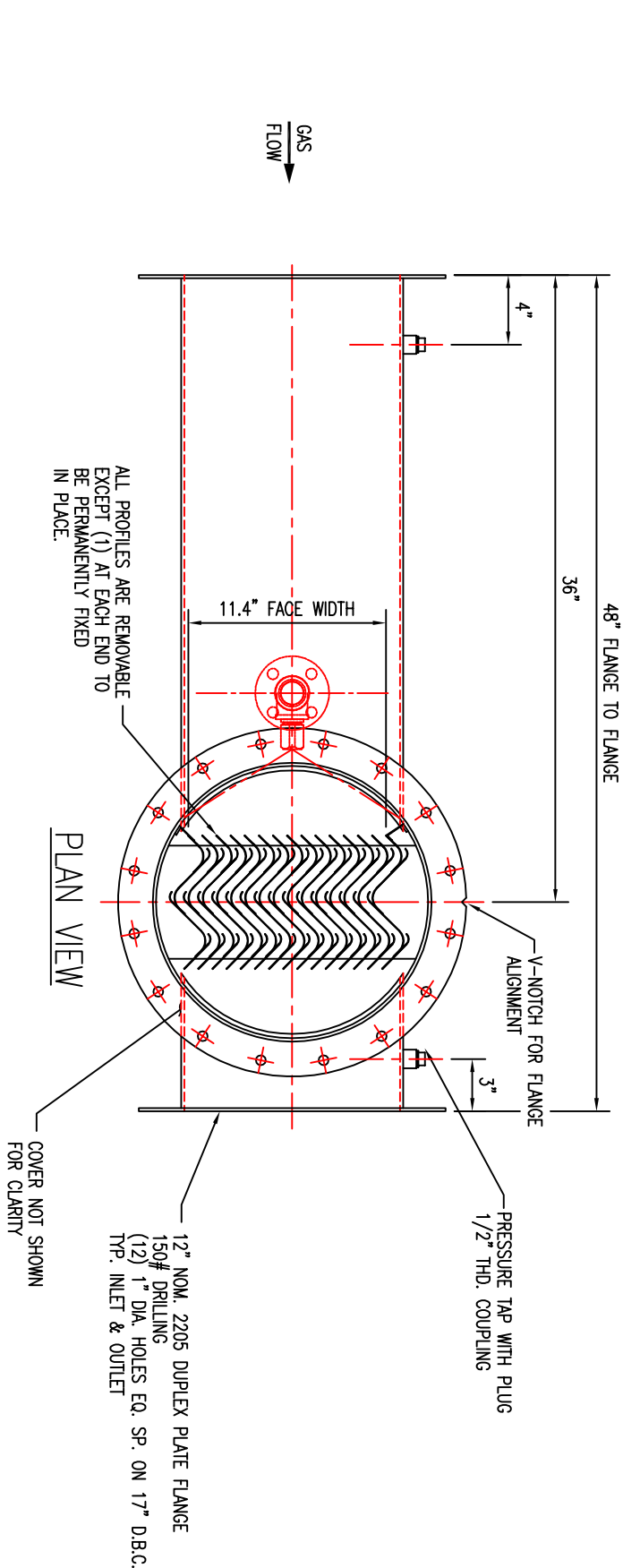



NOTES

- 1. MATERIAL: VESSEL - 2205 DUPLEX
INLET & OUTLET FLANGES - 12" NOM. 2205 DUPLEX FLANGE PLATE
TS5/3 PROFILES - 2205 DUPLEX
GASKET - GORTEX
BOLTING - 2205 DUPLEX
- 2. DESIGN CHARACTERISTICS: VESSEL UPSET DESIGN PRESSURE: 10 PSIG TO FULL VACUUM
OPERATING CONDITIONS: ATMOSPHERIC @ 212F
FLOW RATE: 3333 m3/h
PRESSURE DROP: 3.0" w.c.
- 3. APPROXIMATE WEIGHT: 370 LBS.
- 4. ALL FLANGE HOLES TO STRADDLE NATURAL CENTERLINES.
- 5. SEE MUNTERS FORM EB-IMT5HF-0501 FOR INSPECTION & MAINTENANCE INSTRUCTIONS.
- 6. DRAIN SYSTEM MUST BE CONNECTED TO ADEQUATE SEAL TO PREVENT GAS PASSAGE (BY OTHERS).



SYM.	REVISION DESCRIPTION	BY	DATE
A	MODIFIED O.A VESSEL LENGTH TO 48" AND MODIFIED FLANGE	NM	3/30 2020
B	ADDED UPSET DESIGN PRESSURE VESSEL RATING NOTE	NM	3/30 2020

**Munters**
210 6TH STREET, S.E.
FT. MYERS, FL 33907
TEL: 888-446-6887

CUSTOMER: CALORIS ENGINEERING

PO #: 004308

SO #: 141763


DWG. #: B-50193-01

GAS FLOW

NAME TAG DETAIL

(1) REQUIRED

CERTIFIED
FOR CONSTRUCTION
DATE: 3/30/2020
BY
Nicole Wingers

DRAWN BY	NM	SCALE	N.T.S.	 THE MUNTERS CORPORATION 210 6TH STREET, 33907 P.O. BOX 6428 FT. MYERS FLORIDA 33911 PHONE (239) 936-1555 FAX (239) 278-1316	NOTES: THIS DRAWING IS THE PROPERTY OF THE MUNTERS CORPORATION FT. MYERS, FL. AND IS LOANED SUBJECT TO THE CONDITION THAT IT SHALL NOT BE REPRODUCED, COPIED, LOANED OR SUBMITTED TO OUTSIDE PARTIES FOR EXAMINATION WITHOUT OUR WRITTEN CONSENT, AND SHALL UPON REQUEST, BE RETURNED. COPYRIGHT ©1999 BY MUNTERS CORP. DO NOT SCALE DRAWING. FOR CONSTRUCTION.	
CHECKED BY	PM	DATE	3/24/2020			
APPROVED BY	ER	FOR	CALORIS ENGINEERING			
			G002-50193 (141763)			
TITLE						
GENERAL ARRANGEMENT: TS5/3-20 PROFILES IN A 16" DIA. CAN (48" FLANGE TO FLANGE)						
DRAWING NUMBER	B-50193-01				SHEET 1 OF 1	REV. B
FILE No. GA50193-RevB						